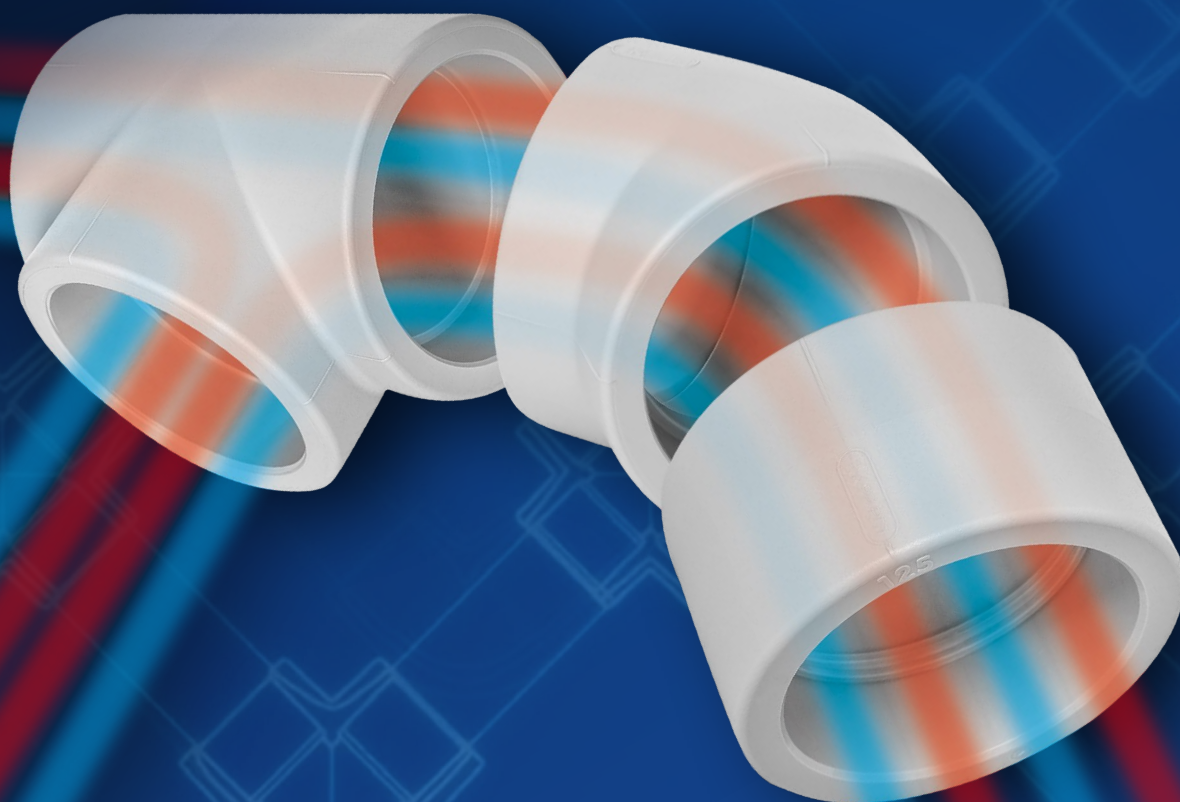


Water distribution
Heating and cooling

System Ekoplastik

Catalogue of Products



wavin

Catalogue of Products

Contents

| | |
|--|----|
| Product Range | 3 |
| Wavin Ekoplastik System – Benefits, Designation of Pipes S (SDR) instead of PN | 5 |
| Standard Products for Potable (Cold) and Hot Water and for Heating (I.) | 6 |
| Complete Offer of Fittings for Gypsum Wall Mounting (I.) | 29 |
| Special Fittings for Heating (I.) | 30 |
| Standard Products only for Potable (Cold) Water (II) | 35 |
| Product for Temporary Use (non Standard) (III)..... | 35 |
| Accessories (IV) | 37 |
| Products for Potable (Cold) and Hot Water, Heating and Air Condition (I.)..... | 46 |
| Accessories (IV) | 50 |

Product Range Basic Information

Major areas of application of individual pipe types



Ekoplastik PPR PN10
Ø 20-125 mm

Ekoplastik PPR PN16
Ø 16-125 mm

Ekoplastik PPR PN20
Ø 16-125 mm

Ekoplastik Evo / Evo Plus
Ø 16-125 mm

Ekoplastik Stabi Plus
Ø 16-110 mm

Ekoplastik Fiber Basalt Plus
Ø 20-125 mm

Ekoplastik Fiber Basalt Clima
Ø 20-125 mm



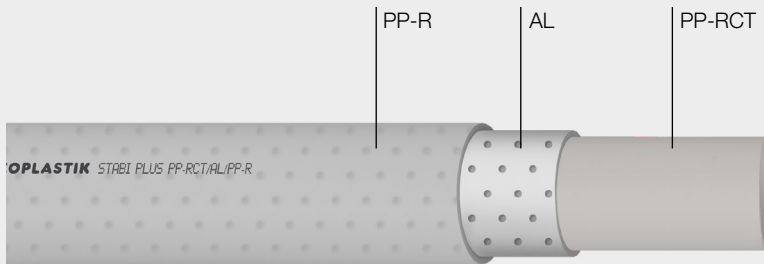
max. 70 °C



max. 90 °C

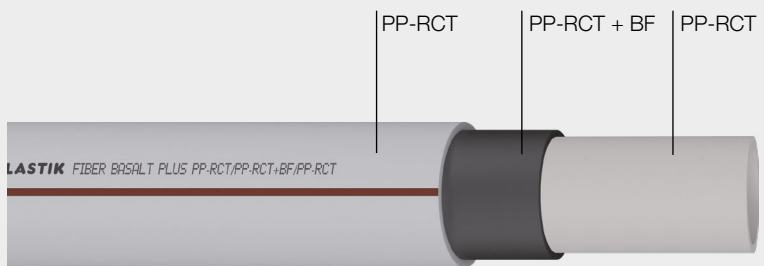
Catalogue of Products

Multilayer pipes made from PP-RCT



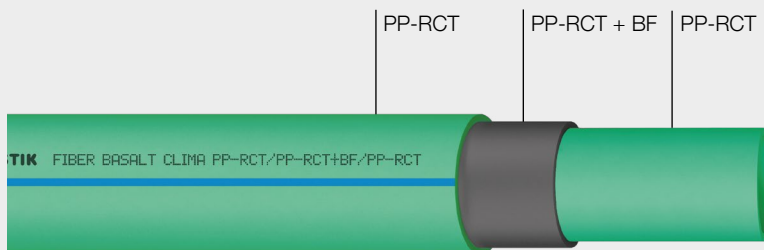
Ekoplastik Stabi Plus

- 3× lesser thermal expansion
- oxygen barrier
- heating



Ekoplastik Fiber Basalt Plus

- 3× lesser thermal expansion
- no need to shave before welding
- hot water, heating



Ekoplastik Fiber Basalt Klima

- 3× lesser thermal expansion
- no need to shave before welding
- cold water, air conditioning

System Ekoplastik

System Ekoplastik is plastic piping system used for hot and cold water distribution in buildings, floor and central heating and airconditioning.

Benefits

- ⦿ high quality PP piping systems from Wavin
- ⦿ includes new 4th generation material PP-RCT
- ⦿ includes unique 3 layer pipes with basalt fiber re-inforcement
- ⦿ new 4 layer pipes with basalt fiber and oxygen barrier
- ⦿ high pressure and temperature resistance

Designation of Pipes S (SDR) instead of PN

Designation of pipes S (SDR) instead of PN In accordance with the ČSN EN ISO15874 and DIN 8077 standards, it is necessary to designate the pipes as „S“ or „SDR“ instead of „PN“.

$$\text{SDR} = 2S+1$$

$$\text{SDR} \approx D/t$$

Legend:

D = outside diameter
t = the wall thickness

- ⦿ The „PN“ designation indicates the permissive operating pressure in bar for maximum temperature 20 °C and service life of 50 years
- ⦿ For the lowest design coefficient according to „PN“, the standards ČSN EN ISO 15874 and DIN 8077 no longer specify the pipe classification.

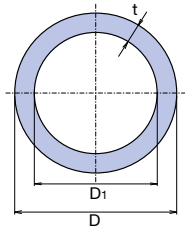
- ⦿ We designate the PPR tubes as „PN“ for historical reasons (it used to be the former designation for the pressurised product range) although the values no longer correspond to the definition above.
- ⦿ The PP-RCT is a new type of material and the „PN“ designation has not been implemented.
- ⦿ The operating parameters of the pipes are specified in the designation on the tubes and in the Assembly instructions.

The catalogue states the „PN“ values for the pipes made of PP-RCT for easier orientation (the „PN“ formula as specified in the standard was used in the calculation).

Catalogue of Products

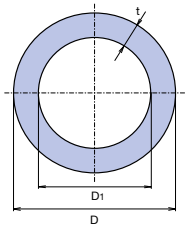
Standard Products for Potable (Cold) and Hot Water and for Heating (I.)

Pipe Ekoplastik S 5 / PN 10 / SDR 11



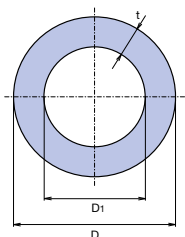
| D mm | D ₁ mm | t mm | l mm | ⊞ m | ⚖ kg/m | CODE |
|---------|----------------------|---------|---------|--------|-----------|------------|
| 20 | 15,6 | 2,2 | 4000 | 100 | 0,121 | STR020P10X |
| 25 | 20,4 | 2,3 | 4000 | 60 | 0,164 | STR025P10X |
| 32 | 26,2 | 2,9 | 4000 | 40 | 0,258 | STR032P10X |
| 40 | 32,6 | 3,7 | 4000 | 24 | 0,413 | STR040P10X |
| 50 | 40,8 | 4,6 | 4000 | 16 | 0,636 | STR050P10X |
| 63 | 51,4 | 5,8 | 4000 | 12 | 1,004 | STR063P10X |
| 75 | 61,4 | 6,8 | 4000 | 8 | 1,401 | STR075P10X |
| 90 | 73,6 | 8,2 | 4000 | 4 | 2,014 | STR090P10X |
| 110 | 90,0 | 10,0 | 4000 | 4 | 3,009 | STR110P10X |
| 125 | 102,2 | 11,4 | 4000 | 4 | 3,910 | STR125P10X |

Pipe Ekoplastik S 3,2 / PN 16 / SDR 7,4

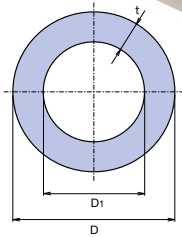


| D mm | D ₁ mm | t mm | l mm | ⊞ m | ⚖ kg/m | CODE |
|---------|----------------------|---------|---------|--------|-----------|------------|
| 16 | 11,6 | 2,2 | 4000 | 160 | 0,094 | STR016P16X |
| 20 | 14,4 | 2,8 | 4000 | 100 | 0,145 | STR020P16X |
| 25 | 18,0 | 3,5 | 4000 | 60 | 0,227 | STR025P16X |
| 32 | 23,2 | 4,4 | 4000 | 40 | 0,367 | STR032P16X |
| 40 | 29,0 | 5,5 | 4000 | 24 | 0,566 | STR040P16X |
| 50 | 36,2 | 6,9 | 4000 | 16 | 0,886 | STR050P16X |
| 63 | 45,8 | 8,6 | 4000 | 12 | 1,387 | STR063P16X |
| 75 | 54,4 | 10,3 | 4000 | 8 | 1,990 | STR075P16X |
| 90 | 65,4 | 12,3 | 4000 | 4 | 2,839 | STR090P16X |
| 110 | 79,8 | 15,1 | 4000 | 4 | 4,274 | STR110P16X |
| 125 | 90,8 | 17,1 | 4000 | 4 | 5,530 | STR125P16X |

Pipe Ekoplastik S 2,5 / PN 20 / SDR 6



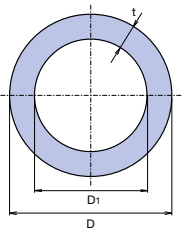
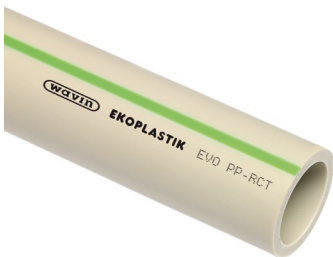
| D mm | D ₁ mm | t mm | l mm | ⊞ m | ⚖ kg/m | CODE |
|---------|----------------------|---------|---------|--------|-----------|------------|
| 16 | 10,6 | 2,7 | 4000 | 160 | 0,107 | STR016P20X |
| 20 | 13,2 | 3,4 | 4000 | 100 | 0,169 | STR020P20X |
| 25 | 16,6 | 4,2 | 4000 | 60 | 0,259 | STR025P20X |
| 32 | 21,2 | 5,4 | 4000 | 40 | 0,423 | STR032P20X |
| 40 | 26,6 | 6,7 | 4000 | 24 | 0,657 | STR040P20X |
| 50 | 33,4 | 8,3 | 4000 | 16 | 1,013 | STR050P20X |
| 63 | 42,0 | 10,5 | 4000 | 12 | 1,611 | STR063P20X |
| 75 | 50,0 | 12,5 | 4000 | 8 | 2,288 | STR075P20X |
| 90 | 60,0 | 15,0 | 4000 | 4 | 3,332 | STR090P20X |
| 110 | 73,4 | 18,3 | 4000 | 4 | 4,977 | STR110P20X |
| 125 | 83,4 | 20,8 | 4000 | 4 | 6,470 | STR125P20X |



Pipe Ekoplastik S 2,5 / PN 20 / SDR 6 - 3 m

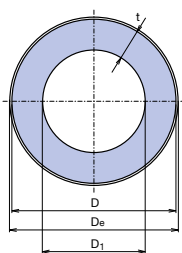
| D mm | D ₁ mm | t mm | l mm | ⊞ m | ⚖ kg/m | CODE |
|---------|----------------------|---------|---------|--------|-----------|------------|
| 20 | 13,2 | 3,4 | 3000 | 75 | 0,169 | STR020P203 |
| 25 | 16,6 | 4,2 | 3000 | 45 | 0,259 | STR025P203 |
| 32 | 21,2 | 5,4 | 3000 | 30 | 0,423 | STR032P203 |

All pipes listed above could be manufactured in alternative lengths to special order by prior agreement.



**Pipe Ekoplastik Evo Plus 16 mm S 3,2 / SDR 7,4 / PN 28 (calculation)
Pipe Ekoplastik Evo Plus 20-25 mm / S 3,2 / SDR 7,4 / PN 28
Pipe Ekoplastik Evo Plus 32-125 mm S 4 / SDR 9 / PN 22 (calculation)**

| D mm | D ₁ mm | t mm | l mm | ⊞ m | ⚖ kg/m | CODE |
|---------|----------------------|---------|---------|--------|-----------|------------|
| 16 | 11,6 | 2,2 | 4000 | 160 | 0,095 | STRE016S32 |
| 20 | 14,4 | 2,8 | 4000 | 100 | 0,161 | STRE020S32 |
| 25 | 18,2 | 3,5 | 4000 | 60 | 0,191 | STRE025S32 |
| 32 | 24,8 | 3,6 | 4000 | 40 | 0,313 | STRE032S4 |
| 40 | 31,0 | 4,5 | 4000 | 24 | 0,487 | STRE040S4 |
| 50 | 38,8 | 5,6 | 4000 | 16 | 0,755 | STRE050S4 |
| 63 | 48,8 | 7,1 | 4000 | 12 | 1,200 | STRE063S4 |
| 75 | 58,2 | 8,4 | 4000 | 8 | 1,690 | STRE075S4 |
| 90 | 69,8 | 10,1 | 4000 | 4 | 2,440 | STRE090S4 |
| 110 | 85,4 | 12,3 | 4000 | 4 | 3,620 | STRE110S4 |
| 125 | 97,0 | 14,0 | 4000 | 4 | 4,660 | STRE125S4 |



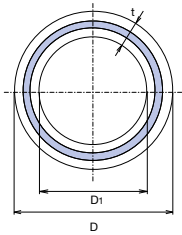
**Pipe Ekoplastik Stabi Plus 16-63mm S 3,2 / SDR 7,4 / PN 28 (calculation)
Pipe Ekoplastik Stabi Plus 75-110mm S 4 / SDR 9 / PN 22 (calculation)**

| D mm | D ₁ mm | D _e mm | t mm | l mm | ⊞ m | ⚖ kg/m | CODE |
|---------|----------------------|----------------------|---------|---------|--------|-----------|------------|
| 16 | 11,4 | 17,9 | 2,2 | 4000 | 120 | 0,137 | STRS016RCT |
| 20 | 14,4 | 21,9 | 2,8 | 4000 | 80 | 0,207 | STRS020RCT |
| 25 | 18,0 | 26,9 | 3,5 | 4000 | 60 | 0,298 | STRS025RCT |
| 32 | 23,2 | 33,9 | 4,4 | 4000 | 40 | 0,465 | STRS032RCT |
| 40 | 29,0 | 41,9 | 5,5 | 4000 | 20 | 0,692 | STRS040RCT |
| 50 | 36,2 | 52,0 | 6,9 | 4000 | 16 | 1,046 | STRS050RCT |
| 63 | 45,8 | 65,0 | 8,6 | 4000 | 8 | 1,587 | STRS063RCT |
| 75 | 58,2 | 77,0 | 8,4 | 4000 | 8 | 1,860 | STRS075RCT |
| 90 | 69,8 | 92,0 | 10,1 | 4000 | 4 | 2,673 | STRS090RCT |
| 110 | 85,4 | 112,0 | 12,3 | 4000 | 4 | 4,022 | STRS110RCT |

Ø 20-110 mm with perforated aluminum foil
job-order manufacture, delivery date 30 days

Catalogue of Products

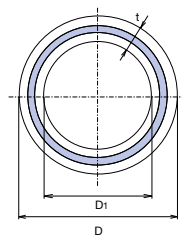
Standard Products for Potable (Cold) and Hot Water and for Heating (I.)



Труба Fiber Basalt Plus 20-63 mm S 3,2 / SDR 7,4 / PN 28 (calculation)
Труба Fiber Basalt Plus 75-125 mm S 4 / SDR 9 / PN 22 (calculation)

| D mm | D ₁ mm | t mm | l mm | m | kg/m | CODE |
|---------|----------------------|---------|---------|-----|-------|--------------|
| 20 | 14,4 | 2,8 | 4000 | 100 | 0,153 | STRFB020TRCT |
| 25 | 18,0 | 3,5 | 4000 | 60 | 0,239 | STRFB025TRCT |
| 32 | 23,2 | 4,4 | 4000 | 40 | 0,385 | STRFB032TRCT |
| 40 | 29,0 | 5,5 | 4000 | 24 | 0,599 | STRFB040TRCT |
| 50 | 36,2 | 6,9 | 4000 | 16 | 0,941 | STRFB050TRCT |
| 63 | 45,8 | 8,6 | 4000 | 12 | 1,471 | STRFB063TRCT |
| 75 | 58,2 | 8,4 | 4000 | 8 | 1,764 | STRFB075TRCT |
| 90 | 69,8 | 10,1 | 4000 | 4 | 2,546 | STRFB090TRCT |
| 110 | 85,4 | 12,3 | 4000 | 4 | 3,781 | STRFB110TRCT |
| 125 | 97,0 | 14,0 | 4000 | 4 | 4,891 | STRFB125TRCT |

job-order manufacture, delivery date 30 days



Труба Fiber Basalt Clima 20-25 mm S 4 / SDR 9 / PN 22 (calculation)
Труба Fiber Basalt Clima 32-125 mm S 5 / SDR 11 / PN 18 (calculation)

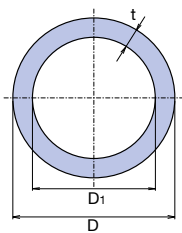
| D mm | D ₁ mm | t mm | l mm | m | kg/m | CODE |
|---------|----------------------|---------|---------|-----|-------|---------------|
| 20 | 15,4 | 2,3 | 4000 | 100 | 0,128 | TTRFBC020TRCT |
| 25 | 19,4 | 2,8 | 4000 | 60 | 0,199 | TTRFBC025TRCT |
| 32 | 26,2 | 2,9 | 4000 | 40 | 0,269 | TTRFBC032TRCT |
| 40 | 32,6 | 3,7 | 4000 | 24 | 0,428 | TTRFBC040TRCT |
| 50 | 40,8 | 4,6 | 4000 | 16 | 0,664 | TTRFBC050TRCT |
| 63 | 51,4 | 5,8 | 4000 | 12 | 1,050 | TTRFBC063TRCT |
| 75 | 61,4 | 6,8 | 4000 | 8 | 1,501 | TTRFBC075TRCT |
| 90 | 73,6 | 8,2 | 4000 | 4 | 2,122 | TTRFBC090TRCT |
| 110 | 90,0 | 10,0 | 4000 | 4 | 3,160 | TTRFBC110TRCT |
| 125 | 102,2 | 11,4 | 4000 | 4 | 4,082 | TTRFBC125TRCT |

job-order manufacture, delivery date 30 days

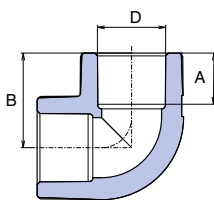


Pipe in Coil

| D mm | S mm | SDR mm | t mm | l m | ☒ | ⚖ kg/m | CODE 100 m | CODE 200 m |
|---------|----------|-----------|---------|---------|---|-----------|---------------|---------------|
| 16 | 3,2 (16) | 7,4 | 2,2 | 100 | 1 | 0,094 | STRK016P17 | |
| 20 | 5,0 (10) | 11 | 2,2 | 100/200 | 1 | 0,121 | STRK020P11 | STRK020P10 |
| 20 | 3,2 (16) | 5,4 | 2,8 | 100/200 | 1 | 0,145 | STRK020P17 | STRK020P16 |
| 16 | 2,5 (20) | 6 | 2,7 | 100/200 | 1 | 0,107 | STRK016P21 | STRK016P20 |
| 20 | 2,5 (20) | 6 | 3,4 | 100/200 | 1 | 0,169 | STRK020P21 | STRK020P20 |



Elbow 90°



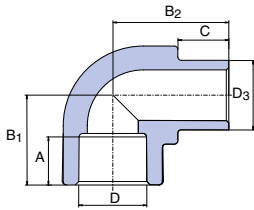
| D mm | A mm | B mm | ☒ I. | ☒ II. | ⚖ kg/pc | CODE |
|---------|---------|---------|---------|----------|------------|-------------|
| 16 | 13,0 | 23,2 | 50 | 250 | 0,010 | SKO01690XX |
| 20 | 14,5 | 26,8 | 50 | 500 | 0,018 | SKO02090XX |
| 25 | 16,0 | 31,0 | 50 | 250 | 0,030 | SKO02590XX |
| 32 | 18,0 | 36,5 | 25 | 150 | 0,056 | SKO03290XX |
| 40 | 20,5 | 43,0 | 10 | 70 | 0,066 | SKO04090RCT |
| 50 | 23,5 | 51,0 | 10 | 40 | 0,125 | SKO05090RCT |
| 63 | 27,5 | 60,0 | 5 | 15 | 0,240 | SKO06390RCT |
| 75 | 30,0 | 70,1 | 2 | 6 | 0,399 | SKO07590RCT |
| 90 | 33,0 | 80,6 | 1 | 6 | 0,600 | SKO09090RCT |
| 110 | 37,0 | 94,6 | 1 | 3 | 1,016 | SKO11090RCT |
| ☉ 125 | 40,0 | 106,6 | 1 | 2 | 1,481 | SKO12590RCT |

☉ Information about delivery on request

Catalogue of Products

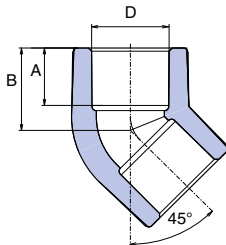
Standard Products for Potable (Cold) and Hot Water and for Heating (I.)

Elbow 90° Internal / External



| D, D ₃ mm | A mm | B ₁ mm | B ₂ mm | C mm | ☐ I. | ☐ II. | ⚖️ kg/pc | CODE |
|-------------------------|---------|----------------------|----------------------|---------|---------|----------|-------------|------------|
| 16 | 13,0 | 21,3 | 25,0 | 12,0 | 50 | 200 | 0,006 | SKO116XXXX |
| 20 | 14,5 | 26,8 | 30,3 | 13,0 | 50 | 250 | 0,014 | SKO120XXXX |
| 25 | 16,0 | 31,0 | 35,0 | 14,0 | 50 | 200 | 0,024 | SKO125XXXX |
| 32 | 18,0 | 36,5 | 42,2 | 16,0 | 25 | 100 | 0,044 | SKO132XXXX |

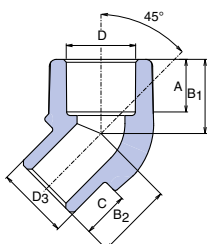
Elbow 45°



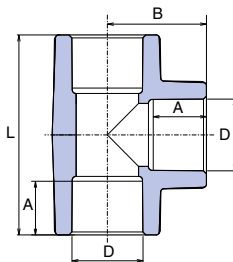
| D mm | A mm | B mm | ☐ I. | ☐ II. | ⚖️ kg/pc | CODE |
|---------|---------|---------|---------|----------|-------------|-------------|
| 16 | 13,0 | 18,7 | 50 | 200 | 0,008 | SKO01645XX |
| 20 | 14,5 | 20,8 | 100 | 500 | 0,014 | SKO02045XX |
| 25 | 16,0 | 24,0 | 50 | 250 | 0,024 | SKO02545XX |
| 32 | 18,0 | 27,0 | 20 | 80 | 0,042 | SKO03245XX |
| 40 | 20,5 | 31,5 | 5 | 25 | 0,052 | SKO04045RCT |
| 50 | 23,5 | 36,5 | 5 | 20 | 0,092 | SKO05045RCT |
| 63 | 27,5 | 43,0 | 5 | 10 | 0,188 | SKO06345RCT |
| 75 | 30,0 | 48,1 | 2 | 6 | 0,272 | SKO07545RCT |
| 90 | 33,0 | 54,5 | 1 | 6 | 0,406 | SKO09045RCT |
| 110 | 37,0 | 62,1 | 1 | 4 | 0,709 | SKO11045RCT |
| ⊕ 125 | 40,0 | 69,8 | 1 | 3 | 1,048 | SKO12545RCT |

⊕ information about delivery on request

Elbow 45° Internal / External



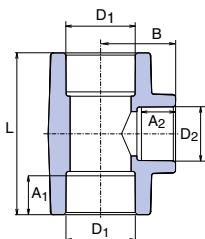
| D mm | D ₃ mm | A mm | B ₁ mm | B ₂ mm | D mm | ☐ I. | ☐ II. | ⚖️ kg/pc | CODE |
|---------|----------------------|---------|----------------------|----------------------|---------|---------|----------|-------------|------------|
| 16 | 16 | 13,0 | 18,7 | 18,7 | 12,0 | 50 | 200 | 0,008 | SKO11645XX |
| 20 | 20 | 14,5 | 20,8 | 21,5 | 13,0 | 10 | 100 | 0,012 | SKO12045XX |
| 25 | 25 | 16,0 | 24,0 | 24,0 | 14,0 | 10 | 100 | 0,026 | SKO12545XX |



Tee

| D mm | A mm | B mm | L mm | ☐ I. | ☐ II. | ⚖ kg/pc | CODE |
|---------|---------|---------|---------|---------|----------|------------|------------|
| 16 | 13,0 | 23,2 | 46,4 | 50 | 250 | 0,012 | STK016XXXX |
| 20 | 14,5 | 27,0 | 54,0 | 50 | 300 | 0,022 | STK020XXXX |
| 25 | 16,0 | 32,0 | 60,0 | 50 | 200 | 0,038 | STK025XXXX |
| 32 | 18,0 | 35,7 | 70,0 | 20 | 100 | 0,070 | STK032XXXX |
| 40 | 20,5 | 38,5 | 86,2 | 10 | 50 | 0,084 | STK040RCTX |
| 50 | 23,5 | 51,0 | 102,0 | 5 | 30 | 0,158 | STK050RCTX |
| 63 | 27,5 | 61,5 | 123,0 | 5 | 15 | 0,317 | STK063RCTX |
| 75 | 30,0 | 70,1 | 140,2 | 1 | 5 | 0,485 | STK075RCTX |
| 90 | 33,0 | 80,6 | 161,2 | 1 | 6 | 0,742 | STK090RCTX |
| 110 | 37,0 | 94,6 | 189,2 | 1 | 3 | 1,231 | STK110RCTX |
| ⊕ 125 | 40,0 | 105,5 | 211,0 | 1 | 2 | 1,764 | STK125RCTX |

⊕ information about delivery on request



Reducing Tee

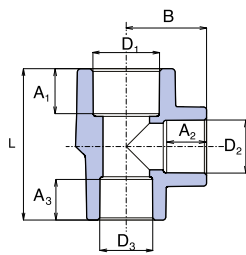
| D1 mm | D2 mm | A1 mm | A2 mm | L mm | B mm | ☐ I. | ☐ II. | ⚖ kg/pc | CODE |
|----------|----------|----------|----------|---------|---------|---------|----------|------------|--------------|
| 20 | 16 | 14,5 | 13,0 | 53,0 | 23,0 | 50 | 300 | 0,018 | STKR02016X |
| 25 | 20 | 16,0 | 14,5 | 55,0 | 29,0 | 50 | 200 | 0,032 | STKR02520X |
| 32 | 20 | 18,0 | 14,5 | 67,0 | 34,4 | 50 | 150 | 0,052 | STKR03220X |
| 32 | 25 | 18,0 | 16,0 | 73,0 | 34,4 | 25 | 100 | 0,062 | STKR03225X |
| 40 | 20 | 20,5 | 14,5 | 66,0 | 37,0 | 20 | 60 | 0,056 | STKR04020RCT |
| 40 | 25 | 20,5 | 16,0 | 71,0 | 38,5 | 10 | 50 | 0,062 | STKR04025RCT |
| 40 | 32 | 20,5 | 18,0 | 78,0 | 41,5 | 10 | 40 | 0,071 | STKR04032RCT |
| 50 | 25 | 23,5 | 16,0 | 77,0 | 43,0 | 5 | 15 | 0,104 | STKR05025RCT |
| 50 | 32 | 23,5 | 18,0 | 84,0 | 46,0 | 5 | 30 | 0,116 | STKR05032RCT |
| 50 | 40 | 23,5 | 20,5 | 92,0 | 48,0 | 5 | 15 | 0,132 | STKR05040RCT |
| 63 | 25 | 27,5 | 16,0 | 85,0 | 49,9 | 5 | 10 | 0,167 | STKR06325RCT |
| 63 | 32 | 27,5 | 18,0 | 92,0 | 52,0 | 5 | 15 | 0,195 | STKR06332RCT |
| 63 | 40 | 27,5 | 20,5 | 100,0 | 54,6 | 5 | 15 | 0,230 | STKR06340RCT |
| 63 | 50 | 27,5 | 23,5 | 110,0 | 57,2 | 5 | 15 | 0,255 | STKR06350RCT |
| 75 | 40 | 30,0 | 20,5 | 115,4 | 63,5 | 1 | 15 | 0,382 | STKR07540RCT |
| 75 | 50 | 30,0 | 23,5 | 115,4 | 63,5 | 1 | 15 | 0,360 | STKR07550RCT |
| 75 | 63 | 30,0 | 27,5 | 128,4 | 67,5 | 1 | 15 | 0,360 | STKR07563RCT |
| 90 | 75 | 33,0 | 30,0 | 146,2 | 77,7 | 1 | 15 | 0,605 | STKR09075RCT |

Catalogue of Products

Standard Products for Potable (Cold) and Hot Water and for Heating (I.)



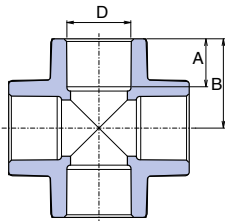
Reducing Tee



| D ₁ mm | D ₂ mm | D ₃ mm | A ₁ mm | A ₂ mm | A ₃ mm | L mm | B mm | ⊕ I. | ⊕ II. | ⚖ kg/pc | CODE |
|----------------------|----------------------|----------------------|----------------------|----------------------|----------------------|---------|---------|---------|----------|------------|-------------|
| 25 | 20 | 20 | 16,0 | 14,5 | 14,5 | 55,2 | 29,3 | 10 | 50 | 0,028 | STKR0252020 |
| 32 | 20 | 20 | 18,0 | 14,5 | 14,5 | 57,3 | 32,8 | 10 | 50 | 0,040 | STKR0322020 |
| 32 | 20 | 25 | 18,0 | 14,5 | 16,0 | 58,9 | 32,8 | 10 | 50 | 0,044 | STKR0322520 |
| 32 | 25 | 25 | 18,0 | 18,0 | 16,0 | 66,0 | 34,4 | 10 | 50 | 0,052 | STKR0322525 |



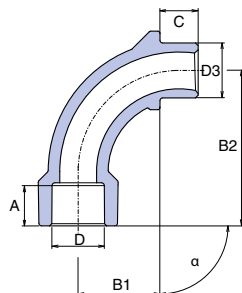
Cross Piece



| D ₃ mm | A mm | B ₁ mm | ⊕ I. | ⊕ II. | ⚖ kg/pc | CODE |
|----------------------|---------|----------------------|---------|----------|------------|------------|
| 20 | 14,5 | 26,3 | 25 | 100 | 0,024 | SKRI020XXX |
| 25 | 16,0 | 30,1 | 25 | 100 | 0,042 | SKRI025XXX |
| 32 | 18,0 | 35,0 | 10 | 40 | 0,070 | SKRI032XXX |
| 40 | 20,5 | 42,0 | 10 | 30 | 0,128 | SKRI040RCT |

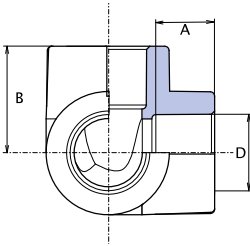


Bend



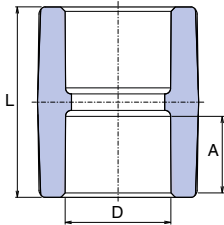
| D mm | D ₃ mm | A mm | B ₁ mm | B ₂ mm | C mm | α | ⊕ I. | ⊕ II. | ⚖ kg/pc | CODE |
|---------|----------------------|---------|----------------------|----------------------|---------|-----|---------|----------|------------|------------|
| 20 | 20 | 14,5 | 37,0 | 56,0 | 13,6 | 90° | 25 | 100 | 0,022 | SO02090XXX |
| 25 | 25 | 16,0 | 45,0 | 67,0 | 14,6 | 90° | 10 | 100 | 0,036 | SO02590XXX |

Three-Way Elbow



| D mm | A mm | B mm | ⊞ I. | ⊞ II. | ⚖ kg/pc | CODE |
|---------|---------|---------|---------|----------|------------|------------|
| 20 | 14,5 | 26,8 | 10 | 50 | 0,020 | SKOT020XXX |
| 25 | 16,0 | 29,5 | 10 | 40 | 0,032 | SKOT025XXX |
| 32 | 18,0 | 35,0 | 5 | 20 | 0,062 | SKOT032XXX |
| 40 | 20,5 | 41,5 | 5 | 15 | 0,108 | SKOT040RCT |

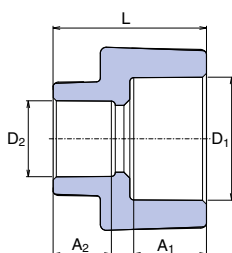
Socket



| D mm | A mm | L mm | ⊞ I. | ⊞ II. | ⚖ kg/pc | CODE |
|---------|---------|---------|---------|----------|------------|------------|
| 16 | 13,0 | 33,0 | 50 | 250 | 0,006 | SNA016XXXX |
| 20 | 14,5 | 34,6 | 50 | 500 | 0,010 | SNA020XXXX |
| 25 | 16,0 | 37,8 | 50 | 250 | 0,018 | SNA025XXXX |
| 32 | 18,0 | 40,0 | 25 | 150 | 0,034 | SNA032XXXX |
| 40 | 20,5 | 48,0 | 20 | 80 | 0,056 | SNA040RCTX |
| 50 | 23,5 | 53,0 | 10 | 70 | 0,082 | SNA050RCTX |
| 63 | 27,5 | 63,0 | 5 | 30 | 0,127 | SNA063RCTX |
| 75 | 30,0 | 68,0 | 1 | 25 | 0,172 | SNA075RCTX |
| 90 | 33,0 | 74,2 | 1 | 20 | 0,275 | SNA090RCTX |
| 110 | 37,0 | 85,2 | 1 | 5 | 0,472 | SNA110RCTX |
| ⊕ 125 | 40,0 | 93,0 | 1 | 6 | 0,638 | SNA125RCTX |

⊕ information about delivery on request

Reducer

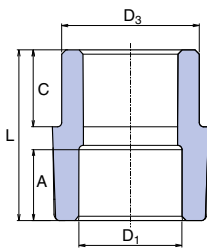


| D ₁ mm | D ₂ mm | A ₁ mm | D ₂ mm | L mm | ⊞ I. | ⊞ II. | ⚖ kg/pc | CODE |
|----------------------|----------------------|----------------------|----------------------|---------|---------|----------|------------|------------|
| 25 | 20 | 16,0 | 14,5 | 34,0 | 50 | 450 | 0,014 | SRE02520XX |
| 32 | 20 | 18,0 | 14,5 | 39,0 | 50 | 250 | 0,026 | SRE03220XX |
| 32 | 25 | 18,0 | 16,0 | 39,5 | 50 | 250 | 0,028 | SRE03225XX |

Catalogue of Products

Standard Products for Potable (Cold) and Hot Water and for Heating (I.)

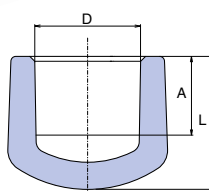
Reducer Internal / External



| D ₃ mm | D ₁ mm | A mm | L mm | C mm | ☒ I. | ☒ II. | ⚖ kg/pc | CODE |
|----------------------|----------------------|---------|---------|---------|---------|----------|------------|---------------|
| 20 | 16 | 13,0 | 32,5 | 13,0 | 50 | 250 | 0,006 | SRE12016XX |
| 25 | 20 | 14,5 | 34,0 | 14,0 | 50 | 500 | 0,010 | SRE12520XX |
| 32 | 20 | 14,5 | 40,0 | 16,0 | 50 | 200 | 0,016 | SRE13220XX |
| 32 | 25 | 16,0 | 39,5 | 16,0 | 50 | 300 | 0,018 | SRE13225XX |
| 40 | 20 | 14,5 | 36,3 | 18,5 | 10 | 50 | 0,021 | SRE14020RCT |
| 40 | 25 | 16,0 | 38,3 | 18,5 | 10 | 50 | 0,022 | SRE14025RCT |
| 40 | 32 | 18,0 | 41,3 | 18,5 | 20 | 60 | 0,023 | SRE14032RCT |
| 50 | 25 | 16,0 | 41,3 | 21,3 | 10 | 50 | 0,035 | SRE15025RCT |
| 50 | 32 | 18,0 | 43,3 | 22,0 | 10 | 50 | 0,035 | SRE15032RCT |
| 50 | 40 | 20,5 | 43,3 | 22,0 | 10 | 50 | 0,035 | SRE15040RCT |
| 63 | 25 | 16,0 | 45,3 | 25,3 | 5 | 50 | 0,060 | SRE16325RCT |
| 63 | 32 | 18,0 | 47,3 | 25,3 | 5 | 70 | 0,056 | SRE16332RCT |
| 63 | 40 | 20,5 | 44,3 | 25,3 | 5 | 70 | 0,058 | SRE16340RCT |
| 63 | 50 | 23,5 | 54,0 | 25,3 | 5 | 70 | 0,076 | SRE16350RCT |
| 75 | 40 | 20,5 | 56,9 | 28,9 | 5 | 20 | 0,094 | SRE17540RCT |
| 75 | 50 | 23,5 | 51,4 | 28,9 | 5 | 20 | 0,100 | SRE17550RCT |
| 75 | 63 | 27,5 | 62,9 | 28,9 | 5 | 25 | 0,112 | SRE17563RCT |
| 90 | 50 | 23,5 | 57,9 | 33,4 | 1 | 20 | 0,157 | SRE19050RCT |
| 90 | 63 | 27,5 | 56,9 | 33,4 | 1 | 20 | 0,150 | SRE19063RCT |
| 90 | 75 | 30,0 | 69,4 | 33,4 | 1 | 12 | 0,185 | SRE19075RCT |
| 110 | 75 | 30,0 | 60,5 | 39,4 | 1 | 10 | 0,251 | SRE111075RCT |
| 110 | 90 | 33,0 | 79,4 | 39,4 | 1 | 12 | 0,303 | SRE111090RCT |
| 125 | 110 | 37,0 | 100,3 | 42,0 | 1 | 10 | 0,500 | SRE1125110RCT |

Information about delivery on request

Blanking Plug

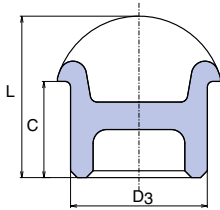


| D mm | A mm | B mm | ☒ I. | ☒ II. | ⚖ kg/pc | CODE |
|---------|---------|---------|---------|----------|------------|------------|
| 16 | 13,5 | 20,9 | 50 | 400 | 0,004 | SZA016XXXX |
| 20 | 14,5 | 24,5 | 50 | 150 | 0,008 | SZA020XXXX |
| 25 | 16,0 | 28,0 | 50 | 150 | 0,014 | SZA025XXXX |
| 32 | 18,0 | 33,0 | 20 | 100 | 0,026 | SZA032XXXX |
| 40 | 20,5 | 34,0 | 5 | 25 | 0,032 | SZA040RCTX |
| 50 | 23,5 | 40,0 | 5 | 25 | 0,061 | SZA050RCTX |
| 63 | 27,5 | 46,5 | 5 | 25 | 0,105 | SZA063RCTX |
| 75 | 30,0 | 60,0 | 5 | 5 | 0,183 | SZA075RCTX |
| 90 | 33,0 | 69,0 | 1 | 6 | 0,279 | SZA090RCTX |
| 110 | 37,0 | 79,0 | 1 | 4 | 0,480 | SZA110RCTX |
| 125 | 40,0 | 79,5 | 1 | 7 | 0,712 | SZA125RCTX |
| 125 | 40,0 | 79,5 | 1 | 7 | 0,712 | SZA125RCTX |

Information about delivery on request



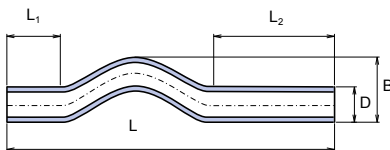
Blanking Plug Internal



| D ₃ mm | C mm | L mm | ⊞ I. | ⊞ II. | ⚖ kg/pc | CODE |
|----------------------|---------|---------|---------|----------|------------|------------|
| 20,0 | 14,3 | 23,5 | 40 | 160 | 0,004 | SZA120XXXE |



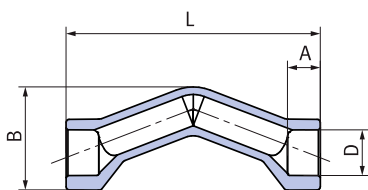
Crossover S 2,5 / PN 20 / SDR 6



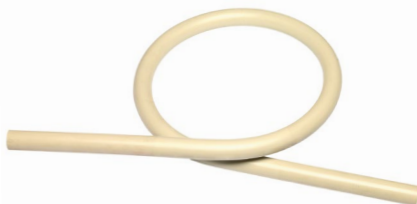
| D ₃ mm | S (PN20) | B mm | L mm | L ₁ mm | L ₂ mm | ⊞ I. | ⊞ II. | ⚖ kg/pc | CODE |
|----------------------|-------------|---------|---------|----------------------|----------------------|---------|----------|------------|------------|
| 16 | 2,5 (20) | 35,0 | 400,0 | 80,0 | 180,0 | 10 | 50 | 0,044 | SKR016P20X |
| 20 | 2,5 (20) | 47,0 | 400,0 | 80,0 | 180,0 | 10 | 50 | 0,070 | SKR020P20X |
| 25 | 2,5 (20) | 52,0 | 400,0 | 80,0 | 120,0 | 10 | 50 | 0,110 | SKR025P20X |
| 32 | 2,5 (20) | 65,0 | 390,0 | 64,0 | 106,0 | 5 | 20 | 0,174 | SKR032P20X |
| 40 | 2,5 (20) | 65,0 | 390,0 | 64,0 | 106,0 | 5 | 20 | 0,268 | SKR040P20X |



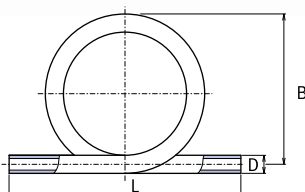
Crossover with Socket



| D mm | S (PN20) | A mm | B mm | L mm | ⊞ I. | ⊞ II. | ⚖ kg/pc | CODE |
|---------|-------------|---------|---------|---------|---------|----------|------------|------------|
| 20 | 2,5 (20) | 14,5 | 42,6 | 117,0 | 10 | 50 | 0,031 | SKRH020P20 |
| 25 | 2,5 (20) | 16,0 | 54,8 | 135,0 | 10 | 50 | 0,060 | SKRH025P20 |



Compensation Pipe S 2,5 / PN 20 / SDR 6

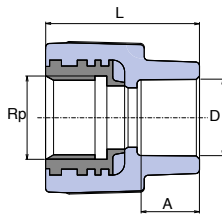


| D mm | S (PN20) | B mm | L mm | ⊞ I. | ⊞ II. | ⚖ kg/pc | CODE |
|---------|-------------|---------|---------|---------|----------|------------|------------|
| 16 | 2,5 (20) | 185,0 | 320,0 | 1 | 10 | 0,090 | SKS016P20X |
| 20 | 2,5 (20) | 200,0 | 450,0 | 1 | 10 | 0,174 | SKS020P20X |
| 25 | 2,5 (20) | 210,0 | 440,0 | 1 | 10 | 0,264 | SKS025P20X |
| 32 | 2,5 (20) | 230,0 | 410,0 | 1 | 5 | 0,430 | SKS032P20X |
| 40 | 2,5 (20) | 290,0 | 450,0 | 1 | 3 | 0,786 | SKS040P20X |

Catalogue of Products

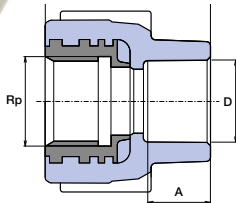
Standard Products for Potable (Cold) and Hot Water and for Heating (I.)

Reducing Sleeve with Metal Female Thread



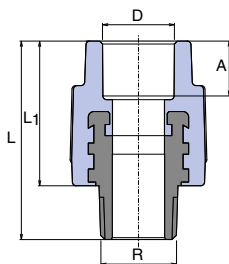
| D mm | Rp mm | A mm | L mm | ☒ I. | ☒ II. | ⚖ kg/pc | CODE |
|---------|----------|---------|---------|---------|----------|------------|-------------|
| 16 | 1/2" | 13,0 | 38,0 | 10 | 50 | 0,050 | SZI01620XX |
| 20 | 1/2" | 14,5 | 39,0 | 10 | 250 | 0,056 | SZI02020XX |
| 20 | 3/4" | 14,5 | 42,0 | 10 | 100 | 0,072 | SZI02025XX |
| 25 | 1/2" | 16,0 | 40,5 | 10 | 50 | 0,062 | SZI02520XX |
| 25 | 3/4" | 16,0 | 47,0 | 10 | 100 | 0,075 | SZI02525XX |
| 32 | 3/4" | 18,0 | 45,0 | 10 | 30 | 0,081 | SZI03225XX |
| 32 | 1" | 18,0 | 51,0 | 10 | 60 | 0,148 | SZI03232OK |
| 40 | 5/4" | 20,5 | 65,5 | 5 | 40 | 0,260 | SZI04040XX |
| 50 | 6/4" | 23,5 | 66,0 | 4 | 20 | 0,328 | SZI05050XX |
| 63 | 2" | 27,5 | 72,5 | 2 | 12 | 0,616 | SZI06363XX |
| 75 | 2 1/2" | 28 | 65,5 | 1 | 8 | 0,676 | SZI07575RCT |
| 90 | 3 | 32 | 90,0 | 1 | 6 | 0,954 | SZI09090RCT |

Reducing Sleeve with Metal Female Thread with Cross



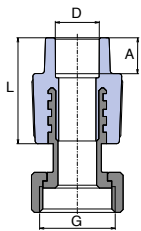
| D mm | Rp mm | A mm | L mm | ☒ I. | ☒ II. | ⚖ kg/pc | CODE |
|---------|----------|---------|---------|---------|----------|------------|------------|
| 20 | 1/2" | 14,5 | 42,0 | 10 | 100 | 0,058 | SZI02020KX |

Reducing Sleeve with Metal Male Thread



| D mm | Rp mm | A mm | L mm | L1 mm | ☒ I. | ☒ II. | ⚖ kg/pc | CODE |
|---------|----------|---------|---------|----------|---------|----------|------------|-------------|
| 16 | 1/2" | 13,0 | 52,0 | 37,5 | 10 | 50 | 0,064 | SZE01620XX |
| 20 | 1/2" | 14,5 | 53,5 | 39,0 | 10 | 150 | 0,062 | SZE02020XX |
| 20 | 3/4" | 14,5 | 58,0 | 40,0 | 10 | 100 | 0,096 | SZE02025XX |
| 25 | 1/2" | 16,0 | 55,5 | 41,0 | 10 | 60 | 0,066 | SZE02520XX |
| 25 | 3/4" | 16,0 | 59,0 | 41,0 | 10 | 100 | 0,098 | SZE02525XX |
| 32 | 3/4" | 18,0 | 60,0 | 44,0 | 10 | 30 | 0,105 | SZE03225XX |
| 32 | 1" | 18,0 | 62,5 | 46,0 | 10 | 60 | 0,170 | SZE03232XX |
| 32 | 1" | 18,0 | 69,5 | 42,0 | 10 | 60 | 0,204 | SZE03232OK |
| 40 | 5/4" | 20,5 | 80,0 | 48,0 | 5 | 40 | 0,312 | SZE04040XX |
| 50 | 6/4" | 23,5 | 81,6 | 54,0 | 4 | 20 | 0,460 | SZE05050XX |
| 63 | 2" | 27,5 | 101,0 | 63,5 | 2 | 12 | 0,758 | SZE06363XX |
| 75 | 2 1/2" | 30,0 | 110,0 | 69,7 | 1 | 8 | 0,885 | SZE07575RCT |
| 90 | 3" | 33,0 | 113,5 | 73,0 | 1 | 6 | 1,228 | SZE09090RCT |

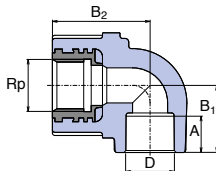
Metal Reducer with Cap Nut



| D mm | G | A mm | L mm | ⊕ I. | ⊕ II. | ⚖ kg/pc | CODE |
|---------|------|---------|---------|---------|----------|------------|------------|
| 16 | 1/2" | 13,0 | 32,0 | 10 | 100 | 0,044 | SZM01620XX |
| 16 | 3/4" | 13,0 | 32,0 | 10 | 200 | 0,082 | SZM01625XX |
| 20 | 1/2" | 14,5 | 40,0 | 20 | 100 | 0,048 | SZM02020XX |
| 20 | 3/4" | 14,5 | 39,0 | 20 | 100 | 0,082 | SZM02025XX |
| 20 | 1" | 14,5 | 39,0 | 5 | 40 | 0,152 | SZM02032XX |
| 25 | 3/4" | 16,0 | 41,1 | 20 | 100 | 0,086 | SZM02525XX |
| 25 | 1" | 16,0 | 41,0 | 4 | 40 | 0,154 | SZM02532XX |
| 32 | 5/4" | 18,0 | 48,0 | 2 | 20 | 0,254 | SZM03240XX |
| ⊕ PMD | | | | | | | |
| 20 | 3/4" | 14,5 | 39,0 | 10 | | 0,084 | SZMD02025 |

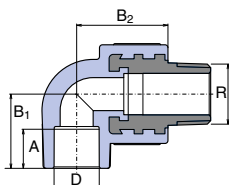
⊕ PMD – cap nut with the hole for the seal

Elbow 90° with Metal Female Thread



| D mm | Rp mm | A mm | B ₁ mm | B ₂ mm | ⊕ I. | ⊕ II. | ⚖ kg/pc | CODE |
|---------|----------|---------|----------------------|----------------------|---------|----------|------------|------------|
| 16 | 1/2" | 13,0 | 25,2 | 31,0 | 10 | 50 | 0,062 | SKOI01620X |
| 20 | 1/2" | 14,5 | 27,0 | 34,5 | 10 | 100 | 0,062 | SKOI02020X |
| 20 | 3/4" | 14,5 | 27,0 | 40,0 | 10 | 50 | 0,082 | SKOI02025X |
| 25 | 1/2" | 16,0 | 31,0 | 36,0 | 10 | 50 | 0,070 | SKOI02520E |
| 25 | 3/4" | 16,0 | 30,0 | 41,0 | 10 | 100 | 0,090 | SKOI02525X |
| 32 | 1" | 18,0 | 36,0 | 51,0 | 10 | 50 | 0,168 | SKOI03232X |

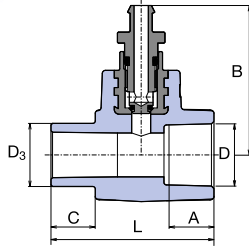
Elbow 90° with Metal Male Thread



| D mm | Rp mm | A mm | B ₁ mm | B ₂ mm | ⊕ I. | ⊕ II. | ⚖ kg/pc | CODE |
|---------|----------|---------|----------------------|----------------------|---------|----------|------------|------------|
| 16 | 1/2" | 13,0 | 25,2 | 31,0 | 10 | 50 | 0,074 | SKOE01620X |
| 20 | 1/2" | 14,5 | 27,0 | 34,5 | 10 | 100 | 0,074 | SKOE02020X |
| 20 | 3/4" | 14,5 | 27,0 | 39,0 | 10 | 50 | 0,112 | SKOE02025X |
| 25 | 1/2" | 16,0 | 31,0 | 36,0 | 10 | 50 | 0,082 | SKOE02520E |
| 25 | 3/4" | 16,0 | 30,0 | 39,0 | 10 | 80 | 0,116 | SKOE02525X |
| 32 | 1" | 18,0 | 36,0 | 41,6 | 5 | 40 | 0,118 | SKOE03232X |

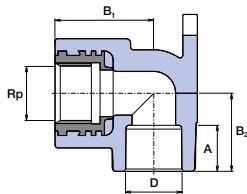
Catalogue of Products

Standard Products for Potable (Cold) and Hot Water and for Heating (I.)



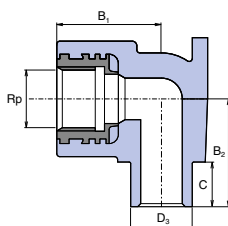
Socket with Drain Valve Internal / External

| D mm | D ₃ mm | A mm | L mm | B mm | C mm | ⊞ I. | ⊞ II. | ⚖ kg/pc | CODE |
|------|-------------------|------|------|------|------|------|-------|---------|------------|
| 20 | 20 | 14,5 | 53,0 | 48,0 | 13,0 | 10 | 100 | 0,054 | SNAVV120XX |
| 25 | 25 | 16,0 | 54,0 | 49,7 | 14,0 | 5 | 150 | 0,064 | SNAVV125XX |
| 32 | 32 | 18,0 | 59,0 | 53,2 | 16,0 | 5 | 100 | 0,084 | SNAVV132XX |



Elbow 90° for Wall Mounting

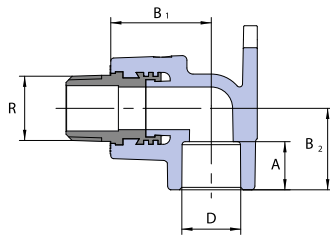
| D mm | Rp | A mm | B ₁ mm | B ₂ mm | ⊞ I. | ⊞ II. | ⚖ kg/pc | CODE |
|------|------|------|-------------------|-------------------|------|-------|---------|------------|
| 16 | 1/2" | 13,0 | 32,0 | 23,2 | 10 | 60 | 0,064 | SNK016XXXX |
| 20 | 1/2" | 14,5 | 34,0 | 26,8 | 10 | 150 | 0,068 | SNK020XXXX |
| 25 | 1/2" | 16,0 | 36,0 | 27,5 | 10 | 50 | 0,072 | SNK02520XX |
| 25 | 3/4" | 16,0 | 39,0 | 29,5 | 10 | 50 | 0,098 | SNK025XXXX |



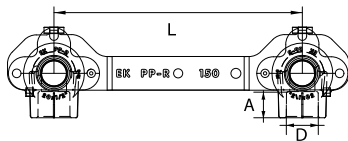
Elbow 90° for Wall Mounting Internal / External

| D ₃ mm | Rp | B ₁ mm | B ₂ mm | C mm | ⊞ I. | ⊞ II. | ⚖ kg/pc | CODE |
|-------------------|------|-------------------|-------------------|------|------|-------|---------|------------|
| 20 | 1/2" | 35,0 | 35,0 | 11,0 | 10 | 120 | 0,068 | SNK120XXXX |

Elbow 90° for Wall Mounting with Metal Male Thread



| D mm | Rp | B ₁ mm | B ₂ mm | A mm | I. | II. | kg/pc | CODE |
|---------|------|----------------------|----------------------|---------|----|-----|-------|------------|
| 20 | 1/2" | 34,0 | 32,2 | 14,5 | 10 | 50 | 0,072 | SNKE02020X |

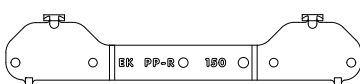


Wall Elbows with Holder

| D mm | A mm | L mm | I. | II. | kg/pc | CODE |
|---------|---------|---------|----|-----|-------|------------|
| 20 | 14,5 | 150 | 10 | 50 | 0,162 | SNKD02020X |



Holder for Wall Elbows



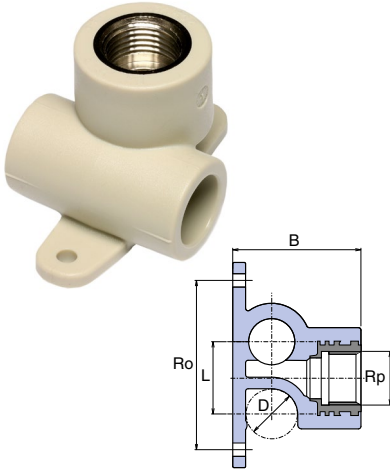
| D mm | L mm | I. | II. | kg/m | CODE |
|---------|---------|----|-----|-------|------------|
| 20 | 150 | 10 | 50 | 0,026 | SDNKXXXXXX |



Catalogue of Products

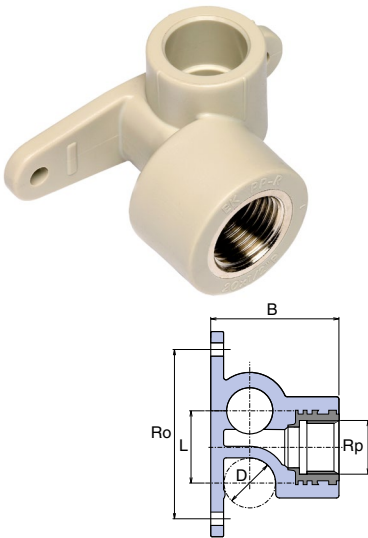
Standard Products for Potable (Cold) and Hot Water and for Heating (I.)

Tee with Tap Connector



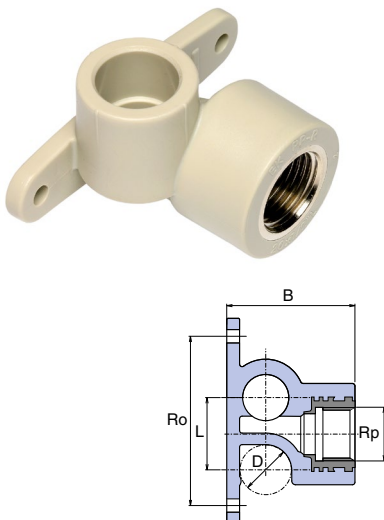
| D mm | Rp | B mm | Ro mm | L mm | ⊘ I. | ⊘ II. | kg/pc | CODE |
|---------|------|---------|----------|---------|---------|----------|-------|------------|
| 20 | 1/2" | 50,0 | 66,0 | 28,5 | 20 | 100 | 0,080 | SNKP020XXX |
| 25 | 1/2" | 56,0 | 76,0 | 33,5 | 10 | 50 | 0,090 | SNKP02520X |

Ending Wall Elbow Left

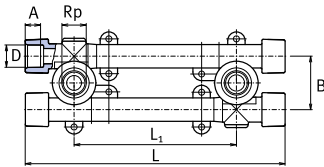


| D mm | Rp | B mm | Ro mm | L mm | ⊘ I. | ⊘ II. | kg/pc | CODE |
|---------|------|---------|----------|---------|---------|----------|-------|------------|
| 20 | 1/2" | 50,0 | 66,0 | 28,5 | 5 | 25 | 0,066 | SNK020KLXX |

Ending Wall Elbow Right



| D mm | Rp | B mm | Ro mm | L mm | ⊘ I. | ⊘ II. | kg/pc | CODE |
|---------|------|---------|----------|---------|---------|----------|-------|------------|
| 20 | 1/2" | 50,0 | 66,0 | 28,5 | 5 | 25 | 0,066 | SNK020KPXX |



Wall Mounting Group with Tap Connectors

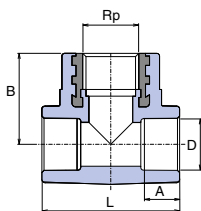
| D mm | Rp | A mm | B mm | ⊙ L ₁ mm | L mm | ⊕ I. | ⊕ II. | ⚖ kg/pc | CODE |
|---------|------|---------|---------|------------------------|---------|---------|----------|------------|------------|
| 20 | 1/2" | 14,5 | 46,0 | 105/130/145 | 229,0 | 1 | 10 | 0,220 | SNKK020XXX |
| 25 | 1/2" | 16,0 | 51,0 | 110/125/140 | 230,0 | 1 | 10 | 0,268 | SNKK025XXX |



⊙ L₁ – extension 100, 135, 150 mm, it is necessary to set right with eccentric parts.



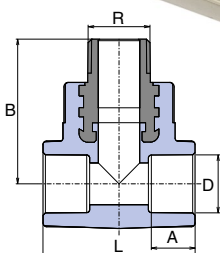
Tee with Metal Female Thread



| D mm | Rp | A mm | L mm | B mm | ⊕ I. | ⊕ II. | ⚖ kg/pc | CODE |
|---------|------|---------|---------|---------|---------|----------|------------|------------|
| 20 | 1/2" | 14,5 | 51,5 | 34,0 | 10 | 100 | 0,068 | STKI02020X |
| 25 | 1/2" | 16,0 | 80,0 | 40,0 | 10 | 100 | 0,076 | STKI02520X |
| 25 | 3/4" | 16,0 | 80,0 | 40,0 | 5 | 30 | 0,094 | STKI02525X |
| 32 | 1/2" | 18,0 | 71,0 | 40,5 | 5 | 20 | 0,106 | STKI03220X |
| 32 | 3/4" | 18,0 | 71,0 | 42,0 | 5 | 25 | 0,118 | STKI03225X |
| 32 | 1" | 18,0 | 80,0 | 55,0 | 5 | 25 | 0,186 | STKI03232X |



Tee with Metal Male Thread

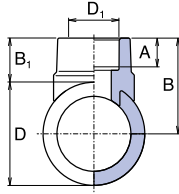


| D mm | Rp | A mm | L mm | B mm | ⊕ I. | ⊕ II. | ⚖ kg/pc | CODE |
|---------|------|---------|---------|---------|---------|----------|------------|------------|
| 20 | 1/2" | 14,5 | 51,5 | 48,5 | 10 | 100 | 0,080 | STKE02020X |
| 20 | 3/4" | 14,5 | 60,0 | 50,0 | 5 | 30 | 0,118 | STKE02025X |
| 25 | 1/2" | 16,0 | 60,0 | 51,0 | 10 | 80 | 0,088 | STKE02520X |
| 25 | 3/4" | 16,0 | 65,0 | 52,5 | 5 | 25 | 0,122 | STKE02525X |
| 32 | 3/4" | 18,0 | 71,0 | 58,3 | 5 | 20 | 0,146 | STKE03225X |
| 32 | 1" | 18,0 | 80,0 | 60,0 | 5 | 20 | 0,208 | STKE03232X |

Catalogue of Products

Standard Products for Potable (Cold) and Hot Water and for Heating (I.)

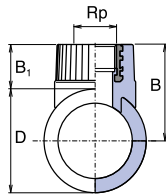
All Plastic Weld in Saddle



| D mm | D ₁ mm | A mm | B ₁ mm | B mm | ⊕ I. | ⊕ II. | ⚖ kg/pc | CODE |
|---------|----------------------|---------|----------------------|---------|---------|----------|------------|-------------|
| 63 | 32 | 18,0 | 21,3 | 55,0 | 10 | 50 | 0,022 | SNS06332RCT |
| 75 | 32 | 18,0 | 21,3 | 61,0 | 10 | 50 | 0,023 | SNS07532RCT |
| 90 | 32 | 18,0 | 21,3 | 69,0 | 10 | 50 | 0,024 | SNS09032RCT |
| 110 | 32 | 18,0 | 25,7 | 80,7 | 10 | 40 | 0,034 | SNS11032RCT |
| 110 | 40 | 21,0 | 25,7 | 80,7 | 10 | 40 | 0,036 | SNS11032RCT |
| ⊕ 125 | 32 | 18,0 | 22,0 | 84,5 | 5 | 40 | 0,033 | SNS12532RCT |
| ⊕ 125 | 40 | 21,0 | 28,0 | 90,5 | 5 | 40 | 0,037 | SNS12540RCT |
| ⊕ 125 | 50 | 23,5 | 29,5 | 92,0 | 1 | 5 | 0,042 | SNS12550RCT |
| ⊕ 125 | 63 | 27,5 | 37,0 | 99,5 | 1 | 5 | 0,047 | SNS12563RCT |

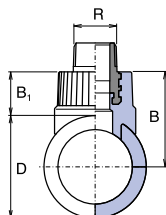
⊕ Information about delivery on request

Weld in Saddle with Metal Female Thread

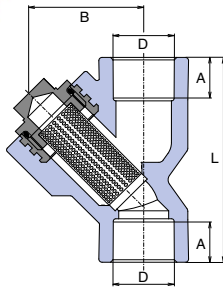


| D mm | Rp | B ₁ mm | B mm | ⊕ I. | ⊕ II. | ⚖ kg/pc | CODE |
|---------|------|----------------------|---------|---------|----------|------------|------------|
| 63 | 3/4" | 27,0 | 58,5 | 10 | 50 | 0,084 | SNSI06325X |
| 75 | 3/4" | 27,0 | 64,5 | 10 | 50 | 0,084 | SNSI07525X |
| 90 | 3/4" | 27,0 | 72,0 | 10 | 50 | 0,084 | SNSI09025X |

Weld in Saddle with Metal Male Thread

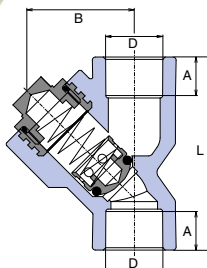


| D mm | Rp | B ₁ mm | B mm | ⊕ I. | ⊕ II. | ⚖ kg/pc | CODE |
|---------|------|----------------------|---------|---------|----------|------------|------------|
| 63 | 3/4" | 44,8 | 76,3 | 10 | 50 | 0,112 | SNSE06325X |
| 75 | 3/4" | 44,8 | 82,3 | 10 | 50 | 0,110 | SNSE07525X |
| 90 | 3/4" | 44,8 | 89,8 | 10 | 50 | 0,110 | SNSE09025X |



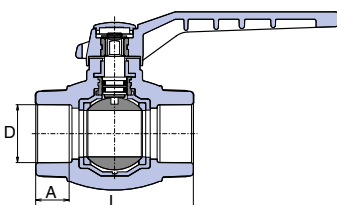
Filter

| D mm | B mm | L mm | A mm | ☒ I. | ☒ II. | ⚖️ kg/pc | CODE |
|---------|---------|---------|---------|---------|----------|-------------|------------|
| 20 | 45,0 | 76,0 | 14,5 | 5 | 40 | 0,116 | SFI020XXXX |
| 25 | 45,0 | 82,0 | 16,0 | 5 | 40 | 0,134 | SFI025XXXX |
| 32 | 55,0 | 95,0 | 18,0 | 5 | 40 | 0,234 | SFI032XXXX |



Back Flow Valve

| D mm | B mm | L mm | A mm | ☒ I. | ☒ II. | ⚖️ kg/pc | CODE |
|---------|---------|---------|---------|---------|----------|-------------|------------|
| 20 | 45,0 | 76,0 | 14,5 | 5 | 40 | 0,136 | SZKL020XXX |
| 25 | 45,0 | 82,0 | 16,0 | 5 | 40 | 0,154 | SZKL025XXX |
| 32 | 55,0 | 95,0 | 18,0 | 5 | 40 | 0,266 | SZKL032XXX |

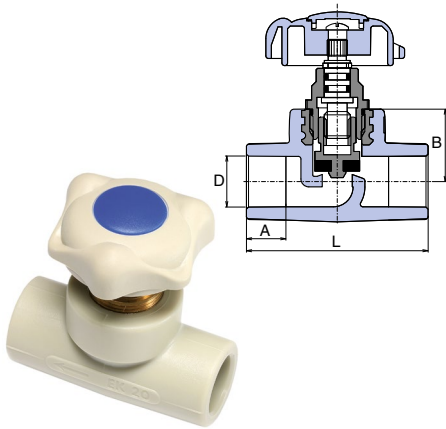


Ball Tap Plastic

| D mm | A mm | L mm | ☒ I. | ☒ II. | ⚖️ kg/pc | CODE |
|---------|---------|---------|---------|----------|-------------|------------|
| 16 | 13,0 | 59,5 | 10 | 50 | 0,092 | SVEK016XXX |
| 20 | 14,5 | 65,0 | 10 | 50 | 0,116 | SVEK020XXX |
| 25 | 16,0 | 71,0 | 10 | 40 | 0,168 | SVEK025XXX |
| 32 | 18,0 | 85,0 | 10 | 20 | 0,294 | SVEK032XXX |
| 40 | 20,5 | 100,0 | 5 | 10 | 0,544 | SVEK040XXX |
| 50 | 23,5 | 115,0 | 1 | 5 | 0,874 | SVEK050XXX |
| 63 | 27,5 | 134,0 | 1 | 5 | 1,278 | SVEK063XXX |

Catalogue of Products

Standard Products for Potable (Cold) and Hot Water and for Heating (I.)



Straight – Way Valve

| D mm | A mm | B mm | L mm | ⊞ I. | ⊞ II. | ⚖ kg/pc | CODE |
|---------|---------|---------|---------|---------|----------|------------|------------|
| 20 | 14,5 | 27,5 | 69,0 | 10 | 50 | 0,140 | SVE020XXXX |
| 25 | 16,0 | 30,0 | 80,0 | 10 | 30 | 0,192 | SVE025XXXX |
| 32 | 18,0 | 39,0 | 89,0 | 5 | 15 | 0,380 | SVE032XXXX |
| 40 | 20,5 | 41,0 | 112,0 | 5 | 15 | 0,542 | SVE040XXXX |
| 50 | 23,5 | 48,0 | 136,0 | 1 | 10 | 0,732 | SVE050XXXX |
| 63 | 27,5 | 60,0 | 162,0 | 1 | 8 | 1,330 | SVE063XXXX |



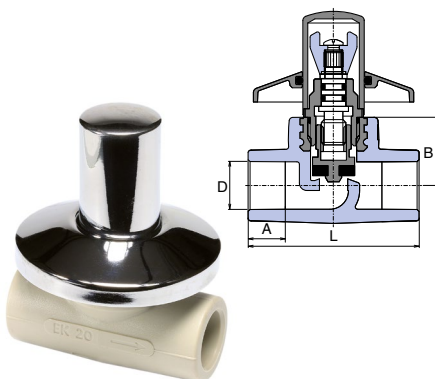
Spare Parts / Roller Knob

| D mm | ⊞ I. | ⊞ II. | ⚖ kg/pc | CODE |
|---------|---------|----------|------------|--------------|
| 20 - 25 | 1 | 5 | 0,015 | STOCVM02025S |
| 32 - 40 | 1 | 5 | 0,028 | STOCVS03240S |
| 50 - 63 | 1 | 1 | 0,041 | STOCVV05063S |



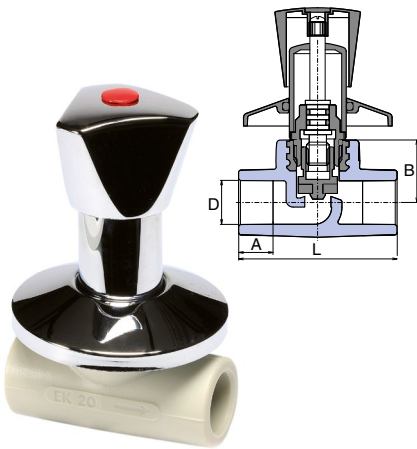
Spare Parts / Top Part Valve

| D mm | ⊞ I. | ⊞ II. | ⚖ kg/pc | CODE |
|---------|---------|----------|------------|------------|
| 20 | 1 | 5 | 0,080 | VRV020XXXX |
| 25 | 1 | 5 | 0,129 | VRV025XXXX |
| 32 | 1 | 5 | 0,211 | VRV032XXXX |
| 40 | 1 | 1 | 0,280 | VRV040XXXX |
| 50 | 1 | 1 | 0,293 | VRV050XXXX |
| 63 | 1 | 1 | 0,460 | VRV063XXXX |



Shut Off Valve Straight with Chrome Cover

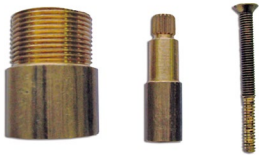
| D mm | A mm | B mm | L mm | ⊞ I. | ⊞ II. | ⚖ kg/pc | CODE |
|---------|---------|---------|---------|---------|----------|------------|------------|
| 20 | 14,5 | 27,5 | 69,0 | 5 | 20 | 0,208 | SVEPLK020X |
| 25 | 16,0 | 30,0 | 80,0 | 5 | 20 | 0,270 | SVEPLK025X |



Shut Off Valve Deluxe Straight with Chrome Handle

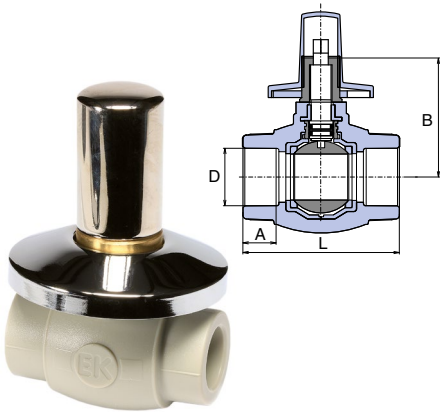
| D mm | A mm | B mm | L mm | ⊞ I. | ⊞ II. | ⚖ kg/pc | CODE |
|---------|---------|---------|---------|---------|----------|------------|------------|
| 20 | 14,5 | 27,5 | 69,0 | 5 | 20 | 0,338 | SVEPLR020X |
| 25 | 16,0 | 30,0 | 80,0 | 5 | 20 | 0,392 | SVEPLR025X |

Valve Extension D 20, 25 mm



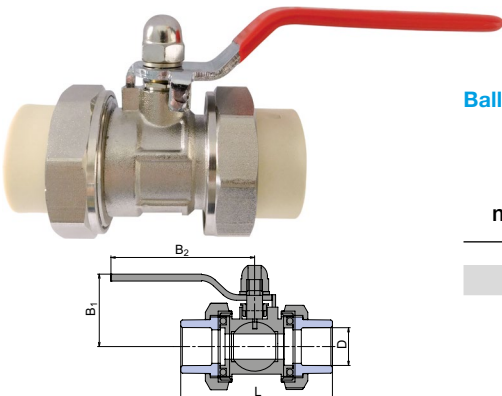
| ⊞ I. | ⚖ kg/pc | CODE |
|---------|------------|------------|
| 1 | 0,071 | VEPL020XXX |

Extension for shut off valves straight Ø 20 a 25 mm.



Shut Off Ball Tap with Chrome Cover

| D mm | A mm | B mm | L mm | ⊞ I. | ⊞ II. | ⚖ kg/pc | CODE |
|---------|---------|---------|---------|---------|----------|------------|------------|
| 20 | 14,5 | 67,0 | 65,0 | 5 | 20 | 0,254 | SVEKPLK020 |
| 25 | 16,0 | 65,0 | 71,0 | 5 | 20 | 0,334 | SVEKPLK025 |

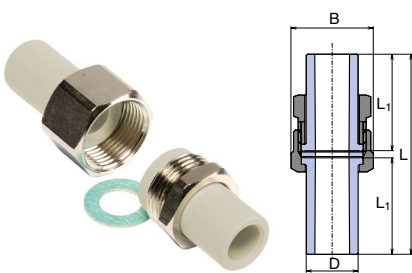


Ball Valve Metal

| D mm | L mm | B ₁ mm | B ₂ mm | ⊞ I. | ⊞ II. | ⚖ kg/pc | CODE |
|---------|---------|----------------------|----------------------|---------|----------|------------|------------|
| 20 | 81,0 | 46,0 | 80,0 | 5 | 25 | 0,293 | SVEKKS020X |
| 25 | 87,0 | 50,0 | 106,0 | 5 | 20 | 0,358 | SVEKKS025X |

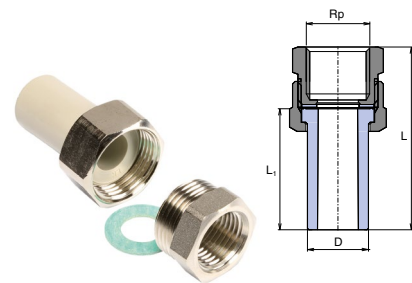
Catalogue of Products

Standard Products for Potable (Cold) and Hot Water and for Heating (I.)



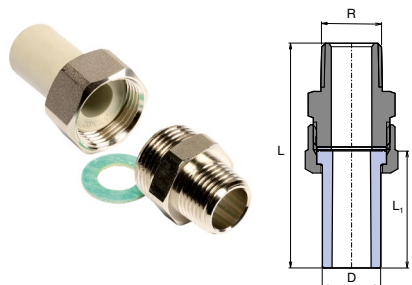
Coupling with Nut

| D mm | B mm | L mm | L ₁ mm | ⊞ I. | ⊞ II. | ⚖ kg/pc | CODE |
|---------|---------|---------|----------------------|---------|----------|------------|------------|
| 20 | 30,0 | 82,0 | 40,0 | 20 | 100 | 0,088 | SRS020XXXX |
| 25 | 38,0 | 82,0 | 40,0 | 20 | 100 | 0,142 | SRS025XXXX |
| 32 | 46,0 | 92,0 | 45,0 | 10 | 50 | 0,212 | SRS032XXXX |
| 40 | 58,0 | 112,0 | 55,0 | 5 | 30 | 0,288 | SRS040XXXX |



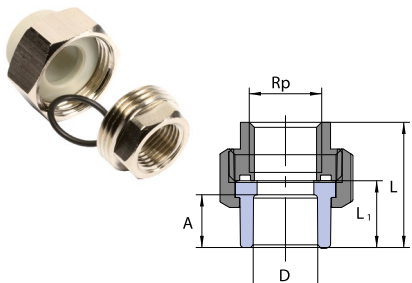
Screw Union - Female

| D mm | Rp | L mm | L ₁ mm | ⊞ I. | ⊞ II. | ⚖ kg/pc | CODE |
|---------|------|---------|----------------------|---------|----------|------------|------------|
| 20 | 1/2" | 60,0 | 40,0 | 10 | 100 | 0,086 | SSI02020XX |
| 25 | 3/4" | 62,0 | 40,0 | 10 | 70 | 0,136 | SSI02525XX |
| 32 | 1" | 70,0 | 45,0 | 10 | 50 | 0,220 | SSI03232XX |



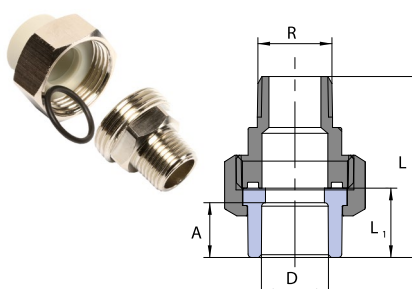
Screw Union - Male

| D mm | Rp | L mm | L ₁ mm | ⊞ I. | ⊞ II. | ⚖ kg/pc | CODE |
|---------|------|---------|----------------------|---------|----------|------------|------------|
| 20 | 1/2" | 77,0 | 40,0 | 10 | 100 | 0,118 | SSE02020XX |
| 25 | 3/4" | 80,0 | 40,0 | 10 | 50 | 0,196 | SSE02525XX |
| 32 | 1" | 92,0 | 45,0 | 10 | 40 | 0,324 | SSE03232XX |



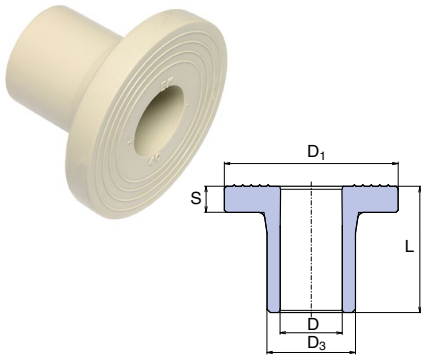
Screw Union with Socket - Female

| D mm | Rp | L mm | L ₁ mm | ⊞ I. | ⊞ II. | ⚖ kg/pc | CODE |
|---------|------|---------|----------------------|---------|----------|------------|-----------|
| 20 | 1/2" | 37,5 | 19,5 | 10 | 100 | 0,122 | SSH02020X |
| 25 | 3/4" | 46,5 | 23,0 | 10 | 70 | 0,213 | SSH02525X |



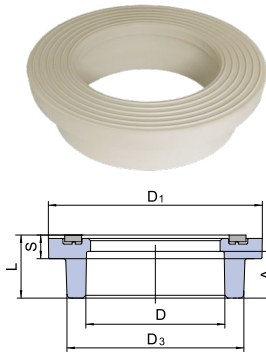
Screw Union with Socket - Male

| D mm | Rp | L mm | L ₁ mm | ⊞ I. | ⊞ II. | ⚖ kg/pc | CODE |
|---------|------|---------|----------------------|---------|----------|------------|------------|
| 20 | 1/2" | 52,5 | 19,5 | 10 | 100 | 0,142 | SSHE02020X |
| 25 | 3/4" | 59,0 | 23,0 | 10 | 50 | 0,223 | SSHE02525X |



Flange Adaptor

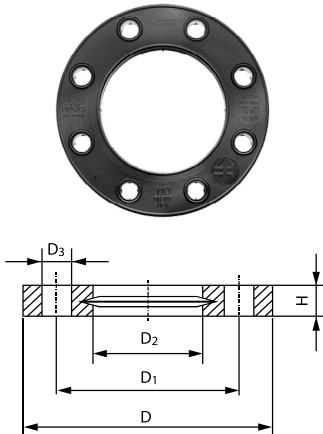
| D ₃ mm | L mm | D ₁ mm | S mm | D mm | ☐ I. | ☐ II. | ⚖ kg/pc | CODE |
|----------------------|---------|----------------------|---------|---------|---------|----------|------------|------------|
| 40 | 58,0 | 80,0 | 12,0 | 30,0 | 2 | 70 | 0,040 | SLN040RCTX |
| 50 | 60,0 | 90,0 | 12,0 | 37,2 | 2 | 60 | 0,065 | SLN050RCTX |
| 63 | 63,0 | 105,0 | 14,0 | 47,0 | 1 | 40 | 0,127 | SLN063RCTX |
| 75 | 73,0 | 123,0 | 14,7 | 56,0 | 1 | 25 | 0,205 | SLN075RCTX |
| 90 | 92,0 | 140,0 | 17,0 | 67,0 | 1 | 15 | 0,320 | SLN090RCTX |
| 110 | 103,0 | 160,0 | 19,0 | 81,0 | 1 | 10 | 0,593 | SLN110RCTX |



Flange Adaptor

| D mm | D ₃ mm | L mm | D ₁ mm | S mm | A mm | ☐ I. | ☐ II. | ⚖ kg/pc | CODE |
|---------|----------------------|---------|----------------------|---------|---------|---------|----------|------------|-----------|
| ⊙125 | 157,0 | 54,0 | 190,0 | 21,0 | 40,0 | 1 | 10 | 0,548 | SLN125RCT |

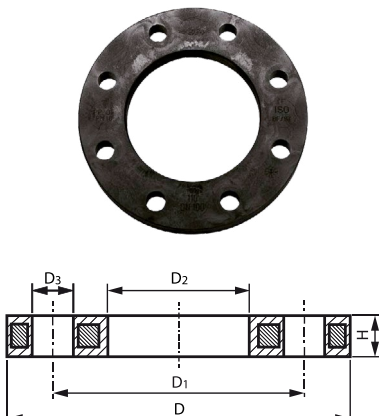
⊙ Information about delivery on request



Flange PP-Glass Fiber Reinforced PN 16

| d mm | DN mm | D mm | D ₁ mm | D ₂ mm | D ₃ mm | H mm | Y | ☐ | ⚖ kg/pc | CODE |
|---------|----------|---------|----------------------|----------------------|----------------------|---------|---|---|------------|-----------|
| ⊙ 40 | 32 | 140 | 100 | 51 | 18 | 20 | 4 | 1 | 0,244 | FF700409W |
| ⊙ 50 | 40 | 150 | 110 | 62 | 18 | 22 | 4 | 1 | 0,297 | FF700410W |
| ⊙ 63 | 50 | 165 | 125 | 78 | 18 | 24 | 4 | 1 | 0,362 | FF700411W |
| ⊙ 75 | 65 | 185 | 145 | 92 | 18 | 26 | 4 | 1 | 0,487 | FF700412W |
| ⊙ 90 | 80 | 200 | 160 | 108 | 18 | 27 | 8 | 1 | 0,544 | FF700513W |
| ⊙ 110 | 100 | 220 | 180 | 128 | 18 | 28 | 8 | 1 | 0,643 | FF700514W |
| ⊙ 140 | 125 | 250 | 210 | 158 | 18 | 30 | 8 | 1 | 0,842 | FF700516W |

⊙ Flange PP - Glass Fiber Reinforced (30% GF) / Y - screw diameter



Flange PP-Steel Plate Reinforced PN 16

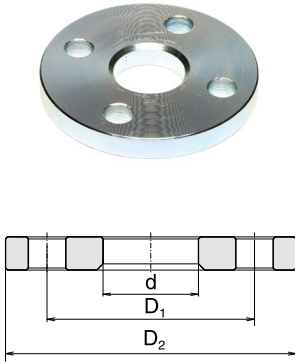
| d mm | DN mm | D mm | D ₁ mm | D ₂ mm | D ₃ mm | H mm | Y | ☐ | ⚖ kg/pc | CODE |
|---------|----------|---------|----------------------|----------------------|----------------------|---------|---|---|------------|-----------|
| ⊙ 40 | 32 | 140 | 100 | 51 | 18 | 16 | 4 | 1 | 0,621 | FF700209W |
| ⊙ 50 | 40 | 150 | 110 | 62 | 18 | 20 | 4 | 1 | 0,722 | FF700210W |
| ⊙ 63 | 50 | 165 | 125 | 78 | 18 | 20 | 4 | 1 | 1,084 | FF700211W |
| ⊙ 75 | 65 | 185 | 145 | 92 | 18 | 20 | 4 | 1 | 1,349 | FF700212W |
| ⊙ 90 | 80 | 200 | 160 | 108 | 18 | 20 | 8 | 1 | 1,390 | FF700213W |
| ⊙ 110 | 100 | 220 | 180 | 128 | 18 | 20 | 8 | 1 | 1,407 | FF700214W |
| ⊙ 140 | 125 | 250 | 210 | 158 | 18 | 26 | 8 | 1 | 2,318 | FF700216W |

⊙ Flange PP - Glass Fiber Reinforced (30% GF) / Y - screw diameter

Catalogue of Products

Standard Products for Potable (Cold) and Hot Water and for Heating (I.)

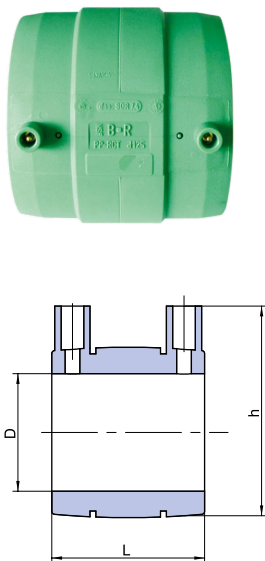
Flange



| | D ₁ mm | D ₂ mm | d mm | Y | ☐ | kg/pc | CODE |
|-------------|----------------------|----------------------|---------|---|---|-------|------------|
| 40 / DN32 | 100,0 | 140,0 | 46,0 | 4 | 1 | 1,660 | PRI040NXXX |
| 50 / DN40 | 110,0 | 150,0 | 54,0 | 4 | 1 | 1,802 | PRI050NXXX |
| 63 / DN50 | 125,0 | 165,0 | 66,0 | 4 | 1 | 2,414 | PRI063NXXX |
| 75 / DN65 | 145,0 | 185,0 | 83,0 | 8 | 1 | 2,978 | PRI075NXXX |
| 90 / DN80 | 160,0 | 200,0 | 94,0 | 8 | 1 | 3,490 | PRI090NXXX |
| 110 / DN100 | 180,0 | 220,0 | 114,0 | 8 | 1 | 4,098 | PRI110NXXX |
| 125 / DN150 | 210,0 | 250,0 | 166,0 | 8 | 1 | 4,450 | PRI125NXXX |

Y – number of bore holes

Electro – Fusion Socket

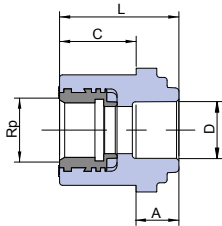


| D mm | L mm | h mm | ☐ I. | ☐ II. | kg/pc | CODE |
|---------|---------|---------|---------|----------|-------|-------------|
| ⊙ 20 | 70 | 52 | 1 | 100 | 0,04 | ENA020PPRCT |
| ⊙ 25 | 70 | 58 | 1 | 80 | 0,05 | ENA025PPRCT |
| ⊙ 32 | 70 | 65 | 1 | 60 | 0,07 | ENA032PPRCT |
| ⊙ 40 | 85 | 75 | 1 | 50 | 0,10 | ENA040PPRCT |
| ⊙ 50 | 88 | 87 | 1 | 30 | 0,16 | ENA050PPRCT |
| ⊙ 63 | 98 | 100 | 1 | 20 | 0,26 | ENA063PPRCT |
| ⊙ 75 | 125 | 114 | 1 | 25 | 0,41 | ENA075PPRCT |
| ⊙ 90 | 146 | 130 | 1 | 18 | 0,51 | ENA090PPRCT |
| ⊙ 110 | 155 | 144 | 1 | 8 | 0,80 | ENA110PPRCT |
| ⊙ 125 | 166 | 167 | 1 | 6 | 0,95 | ENA125PPRCT |

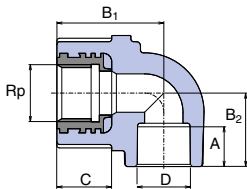
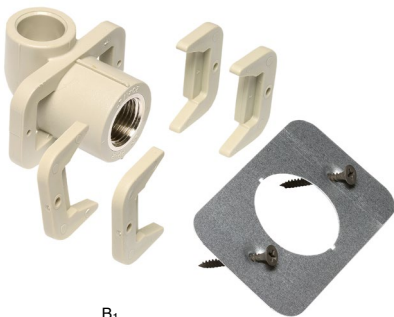
⊙ Information about delivery on request

Complete Offer of Fittings for Gypsum Wall Mounting (I.)

Reducing Sleeve for Gypsum Wall Mounting

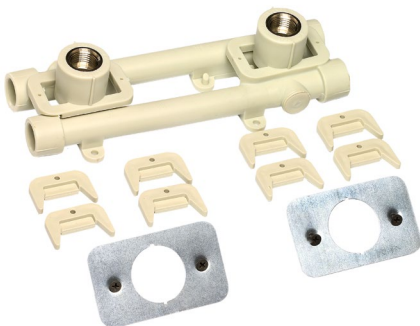


| D mm | Rp | A mm | C mm | L mm | I. I. | II. II. | kg/pc | CODE |
|---------|------|---------|---------|---------|----------|------------|-------|-----------|
| 20 | 1/2" | 14,5 | 26,0 | 40,5 | 1 | 10 | 0,102 | SZS02020X |



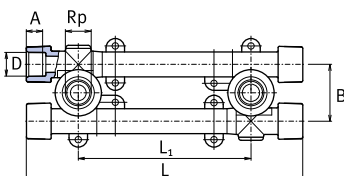
For Gypsum Wall Mounting

| B mm | Rp | A mm | B ₁ mm | B ₂ mm | C mm | I. I. | II. II. | kg/pc | CODE |
|---------|------|---------|----------------------|----------------------|---------|----------|------------|-------|-----------|
| 20 | 1/2" | 15 | 44,0 | 27,0 | 26,0 | 1 | 10 | 0,114 | SNKS020SX |



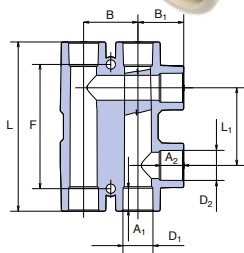
Wall Mounting Group with Tap Connectors for Gypsum Wall

| D mm | Rp | A mm | B mm | L ₁ mm | C mm | L mm | I. I. | II. II. | kg/pc | CODE |
|---------|------|---------|---------|----------------------|---------|---------|----------|------------|-------|------------|
| 20 | 1/2" | 14,5 | 49,0 | 100/135/150 | 26,0 | 234,0 | 1 | 10 | 0,320 | SNKK020SXX |



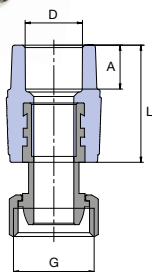
Catalogue of Products

Special Fittings for Heating (I.)



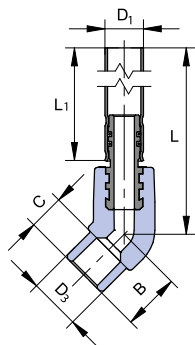
Radiator Turning

| D1 mm | D2 mm | A1 mm | A2 mm | L1 mm | L mm | B1 mm | B mm | I | II | kg/pc | CODE |
|----------|----------|----------|----------|----------|---------|----------|---------|---|----|-------|------------|
| 20 | 20 | 14,5 | 14,5 | 50 | 109 | 29,5 | 35 | 1 | 20 | 0,098 | SRAO02020X |
| 25 | 20 | 16,0 | 14,5 | 50 | 115 | 32,0 | 45 | 1 | 20 | 0,138 | SRAO02520X |



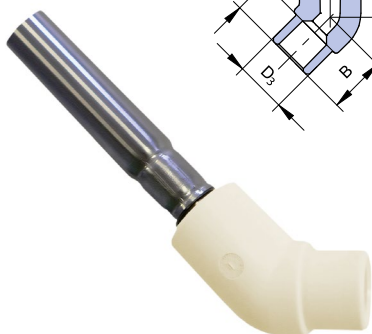
Metal Reducer Cap Nut - Eurokonus

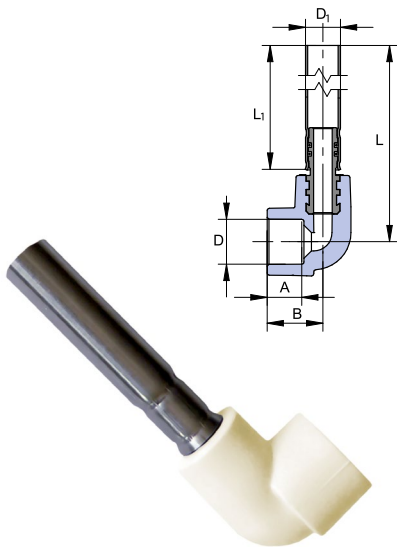
| D mm | G | A mm | L mm | I | II | kg/pc | CODE |
|---------|------|---------|---------|---|----|-------|------------|
| 20 | 3/4" | 14,5 | 40,0 | 5 | 25 | 0,089 | SZM02025EX |



Radiator Connector Elbow 45°

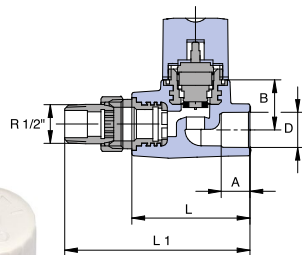
| D1 mm | D3 mm | B mm | C mm | L mm | L1 mm | I | II | kg/pc | CODE |
|----------|----------|---------|---------|---------|----------|---|----|-------|---------------|
| 15 | 20 | 22,5 | 13 | 298 | 270 | 1 | 20 | 0,123 | SKORP12045270 |
| 15 | 20 | 22,5 | 13 | 748 | 720 | 1 | 20 | 0,270 | SKORP12045720 |





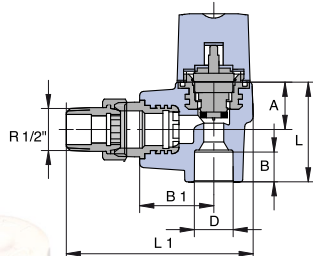
Radiator Connector Elbow 90°

| D mm | D1 mm | A mm | B mm | L mm | L1 mm | ☎ I. | ☎ II. | ⚖ kg/pc | CODE |
|------|-------|------|------|------|-------|------|-------|---------|---------------|
| 20 | 15 | 14,5 | 24 | 300 | 270 | 1 | 20 | 0,126 | SKORP02090270 |
| 20 | 15 | 14,5 | 24 | 750 | 720 | 1 | 10 | 0,273 | SKORP02090720 |



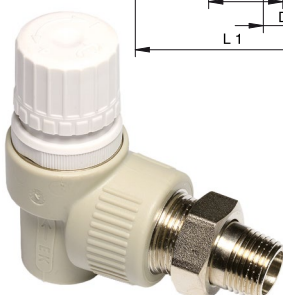
Radiator Valve Straight with Thermostat

| D mm | A mm | B mm | L mm | L1 mm | R mm | ☎ I. | ☎ II. | ⚖ kg/pc | CODE |
|------|------|------|------|-------|------|------|-------|---------|------------|
| 20 | 14,5 | 24,5 | 65 | 102 | 1/2" | 1 | 20 | 0,265 | SVER020PXX |



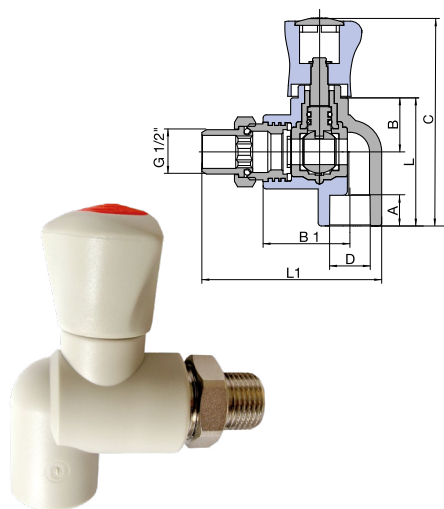
Radiator Valve Angle with Thermostat

| D mm | A mm | B mm | B1 mm | L mm | L1 mm | R mm | ☎ I. | ☎ II. | ⚖ kg/pc | CODE |
|------|------|------|-------|------|-------|------|------|-------|---------|------------|
| 20 | 14,5 | 23,5 | 36,5 | 49,5 | 93 | 1/2" | 1 | 20 | 0,269 | SVER020RXX |



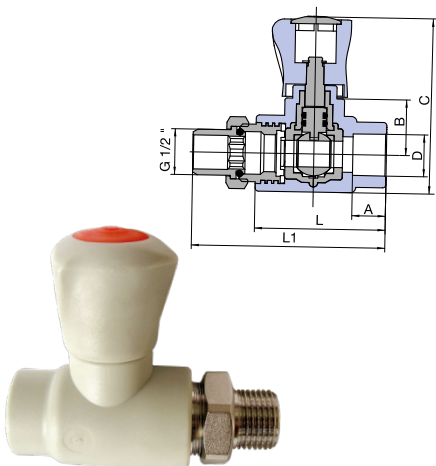
Catalogue of Products

Special Fittings for Heating (I.)



Radiator Valve Straigh

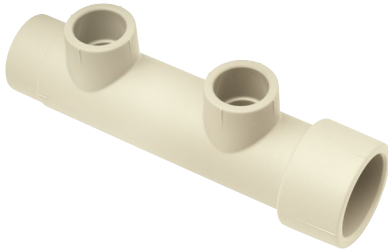
| D mm | A mm | B mm | L mm | L ₁ mm | ☼ I. | ☼ II. | ⚖ kg/pc | CODE |
|---------|---------|---------|---------|----------------------|---------|----------|------------|------------|
| 20 | 14,5 | 25,5 | 60 | 89 | 5 | 20 | 0,188 | SVER020KXX |



Radiator Valve Angle

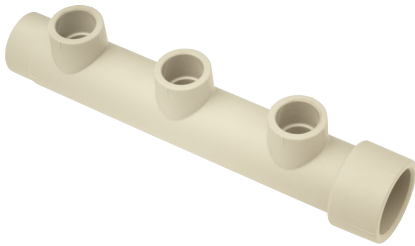
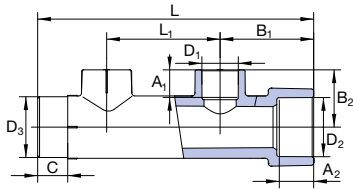
| D mm | A mm | B mm | B ₁ mm | L mm | L ₁ mm | ☼ I. | ☼ II. | ⚖ kg/pc | CODE |
|---------|---------|---------|----------------------|---------|----------------------|---------|----------|------------|------------|
| 20 | 14,5 | 25,5 | 41 | 60 | 85 | 5 | 20 | 0,192 | SVER020XXX |

Special Fittings PP-RCT for Heating (I.)



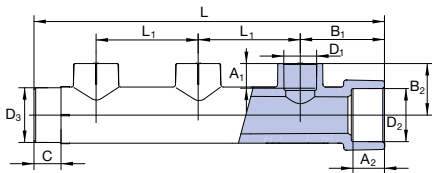
Manifold 2 Circuits PP-RCT

| L ₁ mm | L mm | B ₁ mm | B ₂ mm | A ₁ mm | A ₂ mm | D ₃ mm | D ₂ mm | D ₁ mm | C mm | ⊕ I. | ⊕ II. | ⚖ kg/pc | CODE |
|----------------------|---------|----------------------|----------------------|----------------------|----------------------|----------------------|----------------------|----------------------|---------|---------|----------|------------|---------------|
| 60 | 146 | 49,5 | 30 | 13 | 18 | 32 | 32 | 16 | 16 | 5 | 20 | 0,072 | SROZ132162RCT |
| 60 | 146 | 49,5 | 30 | 16 | 18 | 32 | 32 | 20 | 16 | 5 | 20 | 0,068 | SROZ132202RCT |



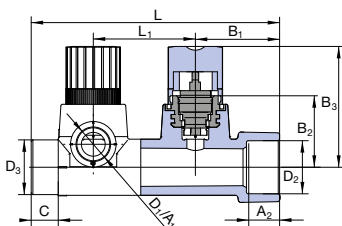
Manifold 3 Circuits PP-RCT

| L ₁ mm | L mm | B ₁ mm | B ₂ mm | A ₁ mm | A ₂ mm | D ₃ mm | D ₂ mm | D ₁ mm | C mm | ⊕ I. | ⊕ II. | ⚖ kg/pc | CODE |
|----------------------|---------|----------------------|----------------------|----------------------|----------------------|----------------------|----------------------|----------------------|---------|---------|----------|------------|---------------|
| 60 | 206 | 49,5 | 30 | 13 | 18 | 32 | 32 | 16 | 16 | 5 | 20 | 0,103 | SROZ132163RCT |
| 60 | 206 | 49,5 | 30 | 16 | 18 | 32 | 32 | 20 | 16 | 5 | 20 | 0,097 | SROZ132203RCT |



Manifold with Regulation 2 Circuits

| L ₁ mm | L mm | B ₁ mm | B ₂ mm | B ₃ mm | A ₂ mm | D ₃ mm | D ₂ mm | D ₁ mm | C mm | ⊕ I. | ⊕ II. | ⚖ kg/pc | CODE |
|----------------------|---------|----------------------|----------------------|----------------------|----------------------|----------------------|----------------------|----------------------|---------|---------|----------|------------|----------------|
| 60 | 146 | 49,5 | 42 | 77 | 18 | 32 | 32 | 16 | 16 | 1 | 10 | 0,326 | SROZI032162RCT |
| 60 | 146 | 49,5 | 42 | 77 | 18 | 32 | 32 | 20 | 16 | 1 | 10 | 0,323 | SROZI032202RCT |



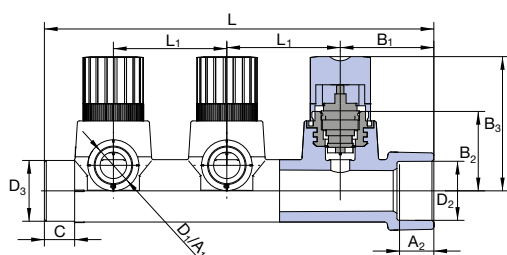
Catalogue of Products

Special Fittings PP-RCT for Heating (I.)



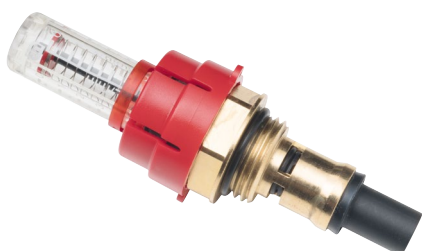
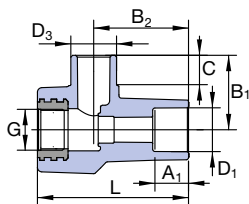
Manifold With Regulation 3 Circuits

| L ₁ mm | L mm | B ₁ mm | B ₂ mm | B ₃ mm | A ₁ mm | A ₂ mm | D ₃ mm | D ₂ mm | D ₁ mm | C mm | ⊗ I. | ⊗ II. | ⚖ kg/pc | CODE |
|----------------------|---------|----------------------|----------------------|----------------------|----------------------|----------------------|----------------------|----------------------|----------------------|---------|---------|----------|------------|----------------|
| 60 | 206 | 49,5 | 42 | 77 | 13,0 | 18 | 16 | 32 | 32 | 16 | 1 | 10 | 0,482 | SROZI032163RCT |
| 60 | 206 | 49,5 | 42 | 77 | 14,5 | 18 | 20 | 32 | 32 | 16 | 1 | 10 | 0,478 | SROZI032203RCT |



Flowmeter Body

| A ₁ mm | D ₁ mm | G | C mm | D ₃ mm | B ₁ mm | B ₂ mm | L mm | ⊗ I. | ⊗ II. | ⚖ kg/pc | CODE |
|----------------------|----------------------|------|---------|----------------------|----------------------|----------------------|---------|---------|----------|------------|-------------|
| 13,0 | 16 | 1/2" | 16 | 20 | 34 | 42 | 67 | 5 | 20 | 0,482 | STPI2016RCT |
| 14,5 | 20 | 1/2" | 16 | 20 | 34 | 42 | 67 | 5 | 20 | 0,478 | STPI2020RCT |

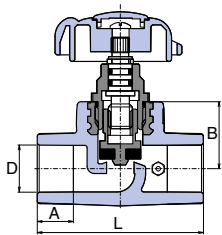


Flowmeter

| G | ⊗ I. | ⚖ kg/pc | CODE |
|------|---------|------------|------------|
| 1/2" | 1 | 0,590 | PRUTMXXXXX |

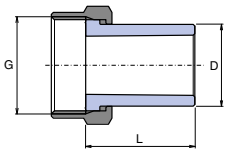
Standard Products only for Potable (Cold) Water (II.)

Straight – Way Valve with Drain Valve



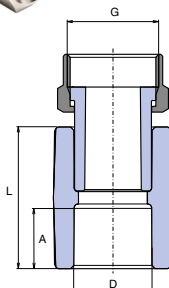
| | D mm | A mm | B mm | L mm | ☒ I. | ☒ II. | ⚖️ kg/pc | CODE |
|-------|---------|---------|---------|---------|---------|----------|-------------|------------|
| right | 40 | 20,5 | 41,0 | 112,0 | 1 | 15 | 0,578 | SVEV040PXX |
| right | 50 | 23,5 | 48,0 | 136,0 | 1 | 10 | 0,788 | SVEV050PXX |
| right | 63 | 27,5 | 60,0 | 162,0 | 1 | 8 | 1,388 | SVEV063PXX |
| left | 40 | 20,5 | 41,0 | 112,0 | 1 | 15 | 0,572 | SVEV040LXX |
| left | 50 | 23,5 | 48,0 | 136,0 | 1 | 10 | 0,754 | SVEV050LXX |
| left | 63 | 27,5 | 60,0 | 162,0 | 1 | 8 | 1,416 | SVEV063LXX |

Job-order manufacture, delivery date 30 days



Union Plastic / Brass Unwelded

| D mm | G | L mm | ☒ I. | ☒ II. | ⚖️ kg/pc | CODE |
|---------|------|---------|---------|----------|-------------|------------|
| 20 | 3/4" | 40,0 | 10 | 100 | 0,048 | SHM02025XX |
| 25 | 1" | 40,0 | 10 | 50 | 0,074 | SHM02532XX |
| 32 | 5/4" | 45,0 | 5 | 100 | 0,096 | SHM03240XX |



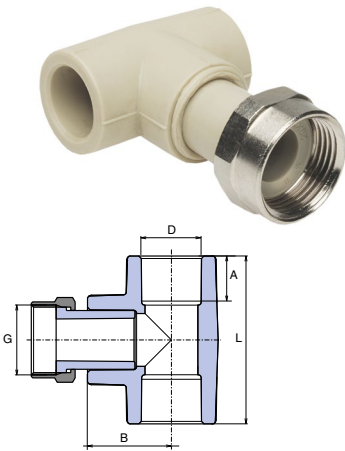
Plastic Reducing Sleeve with Cap Nut

| D mm | G | A mm | L mm | ☒ I. | ☒ II. | ⚖️ kg/pc | CODE |
|------------|------|---------|---------|---------|----------|-------------|------------|
| 16 | 1/2" | 13,0 | 33,0 | 10 | 200 | 0,032 | SNAM01620X |
| 20 | 1/2" | 14,5 | 34,6 | 50 | 200 | 0,034 | SNAM02020X |
| 20 | 3/4" | 14,5 | 34,6 | 25 | 200 | 0,056 | SNAM02025X |
| 25 | 3/4" | 16,0 | 37,8 | 20 | 100 | 0,058 | SNAM02525X |
| 25 | 1" | 16,0 | 37,8 | 10 | 50 | 0,092 | SNAM02532X |
| 32 | 1" | 18,0 | 40,0 | 10 | 50 | 0,102 | SNAM03232X |
| PMD | | | | | | | |
| 20 | 3/4" | 14,5 | 34,6 | 10 | 50 | 0,056 | SNAMD02025 |
| 25 | 3/4" | 16,0 | 37,8 | 10 | 50 | 0,062 | SNAMD02525 |

PMD – cap nut with the hole for the seal

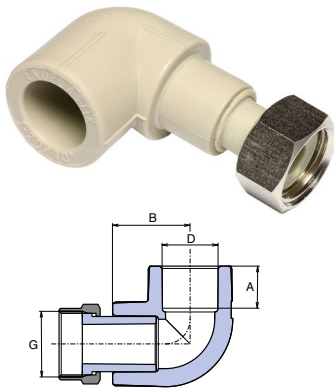
Catalogue of Products

Standard Products only for Potable (Cold) Water (II.)



Tee Plastic Reducing Sleeve with Cap Nut

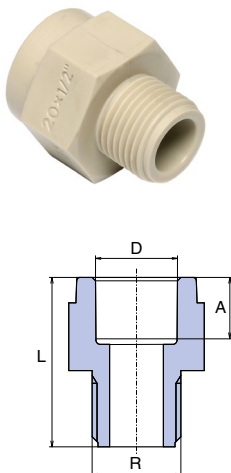
| D mm | G | A mm | B mm | L mm | ☒ I. | ☒ II. | ⚖ kg/pc | CODE |
|---------|------|---------|---------|---------|---------|----------|------------|------------|
| 20 | 3/4" | 14,5 | 54,0 | 27,0 | 10 | 60 | 0,069 | STKM02025X |
| 25 | 3/4" | 16,0 | 60,0 | 32,0 | 5 | 50 | 0,079 | STKM02525X |
| 25 | 1" | 16,0 | 60,0 | 32,0 | 5 | 30 | 0,157 | STKM02532X |
| 32 | 3/4" | 18,0 | 70,0 | 35,7 | 5 | 50 | 0,100 | STKM03225X |
| 32 | 1" | 18,0 | 70,0 | 35,7 | 5 | 50 | 0,135 | STKM03232X |



Elbow 90° Plastic Reducing Sleeve with Cap Nut

| D mm | G | A mm | B mm | ☒ I. | ☒ II. | ⚖ kg/pc | CODE |
|---------|------|---------|---------|---------|----------|------------|------------|
| 20 | 1/2" | 14,5 | 26,8 | 25 | 100 | 0,047 | SKOM02020X |
| 20 | 3/4" | 14,5 | 26,8 | 25 | 100 | 0,062 | SKOM02025X |

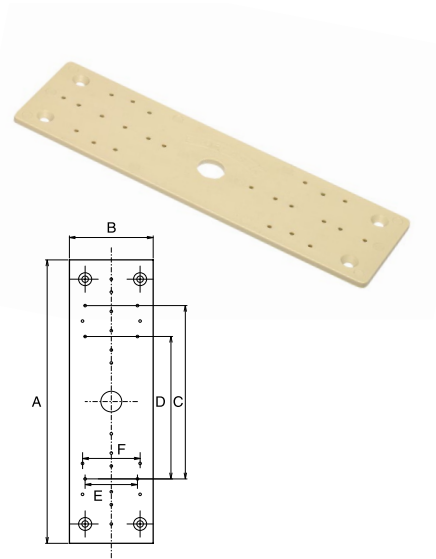
Product for Temporary Use (non Standard) (III.)



All-Plastic Reducer Male Thread

| D mm | R | A mm | L mm | ☒ I. | ☒ II. | ⚖ kg/pc | CODE |
|---------|------|---------|---------|---------|----------|------------|------------|
| 20 | 1/2" | 14,5 | 40,0 | 50 | 200 | 0,014 | SDG02020XX |
| 20 | 3/4" | 14,5 | 38,0 | 50 | 500 | 0,012 | SDG02025XX |
| 25 | 3/4" | 16,0 | 42,0 | 50 | 300 | 0,020 | SDG02525XX |
| 32 | 1" | 18,0 | 54,0 | 25 | 150 | 0,038 | SDG03232XX |
| 40 | 5/4" | 20,5 | 62,0 | 10 | 100 | 0,074 | SDG04040XX |
| 50 | 6/4" | 23,5 | 63,0 | 10 | 50 | 0,094 | SDG05050XX |
| 63 | 2" | 27,5 | 81,9 | 5 | 35 | 0,194 | SDG06363XX |

Accessories (IV.)



Assembly Plate for Elbow 90° for Wall Mounting

| A mm | B mm | C mm | D mm | E mm | F mm | ☒ I. | ☒ II. | ⚖ kg/pc | CODE |
|---------|---------|---------|---------|---------|---------|---------|----------|------------|------------|
| 220,0 | 64,0 | 135,0 | 110,0 | 45,0 | 40,0 | 10 | 50 | 0,058 | DNPXXXXXXX |

Metal Sleeve (with Wood Screw)



| D mm | ☒ | ⚖ kg/pc | CODE |
|---------|----|------------|------------|
| 20 - 25 | 10 | 0,056 | PRK02025XX |
| 32 - 40 | 10 | 0,074 | PRK03240XX |
| 50 - 63 | 10 | 0,124 | PRK06350XX |

Metal Sleeve (Screw / Nut)



| D mm | NUT mm | SCREW mm | ☒ | ⚖ kg/pc | CODE |
|---------|-----------|-------------|-----|------------|------------|
| 48-53 | M8/10 | | 50 | 0,078 | PRKB04853X |
| 72-78 | M8/10 | | 50 | 0,146 | PRKB07278X |
| 87-92 | M8/10 | | 50 | 0,180 | PRKB08792X |
| 102-116 | M8/10 | | 50 | 0,238 | PRKB102116 |
| | | M8/100 | 100 | 0,023 | VRUTM8100X |

Catalogue of Products

Accessories (IV.)

Plastic Clip



| D mm | I. | II. | kg/pc | CODE |
|------|----|-----|-------|------------|
| 16 | 50 | 300 | 0,004 | PRE016XXXX |
| 20 | 50 | 500 | 0,004 | PRE020XXXX |
| 25 | 50 | 500 | 0,006 | PRE025XXXX |
| 32 | 50 | 300 | 0,008 | PRE032XXXX |

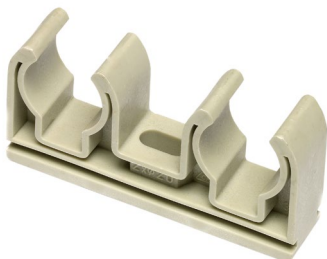
Plastic Clip with Tape



| D mm | I. | II. | kg/pc | CODE |
|------|----|-----|-------|------------|
| 20 | 50 | 500 | 0,008 | PRE020XXXN |
| 25 | 50 | 500 | 0,008 | PRE025XXXN |
| 32 | 50 | 300 | 0,013 | PRE032XXXN |
| 40 | 50 | 400 | 0,016 | PRP040XXXX |
| 50 | 25 | 100 | 0,034 | PRP050XXXX |
| 63 | 25 | 100 | 0,046 | PRP063XXXX |
| ⊙75 | 1 | - | 0,084 | PRP075XXXX |
| ⊙90 | 1 | - | 0,114 | PRP090XXXX |
| ⊙110 | 1 | - | 0,136 | PRP110XXXX |

⊙ Information about delivery on request

Plastic Double Clip



| D m | I. | kg/pc | CODE |
|------|----|-------|------------|
| 2×20 | 1 | 0,016 | PRDV0202XX |
| 2×25 | 1 | 0,022 | PRDV0252XX |

Welding Machine Electronic (for Non-Paired Adapter)



| W | I. | kg/pc | CODE | |
|--------|-----|-------|-------|-------------|
| RSP 2a | 700 | 1 | 1,328 | SVARSP2AXEL |

Welding Machine Electronic (for Paired Adapter)



| | W | | kg/pc | CODE |
|----------|-----|---|-----------|-------------|
| RSP 2aPm | 800 | 1 | 1,428 | SVARSP2APEL |



Welding Set with Adapters 16-63 mm

| | W | | kg/pc | CODE |
|----------|-----|-------------------|-----------|-------------|
| RSP 2a | 700 | adapter Ø 16 – 63 | 9,223 | SVAKRSP2A6E |
| RSP 2aPm | 800 | adapter Ø 16 – 63 | 8,645 | SVAKRSP2P6E |

Includes pipe cutter PROFi, allen key, meter, stabilization jack, foot stand, adapters and welding machine according to the order.



Welding Set with Adapters 20-32 mm

| | W | | kg/pc | CODE |
|----------|-----|-------------------|-----------|-------------|
| RSP 2a | 700 | adapter Ø 20 – 32 | 4,545 | SVAKRSP2A3E |
| RSP 2aPm | 800 | adapter Ø 20 – 32 | 4,490 | SVAKRSP2P3E |

Includes pipe cutter PROFi, allen key, stabilization jack, stabilisation foot stand, adapters and welding machine according to the order.



Welding Machine Electronic R63 (for Paired Adapter)



| W | | | kg/pc | CODE |
|-----|-------------------|---|-----------|------------|
| 800 | adapter Ø 20 – 63 | 1 | 1,820 | SVA063XXXX |

Catalogue of Products

Accessories (IV.)



Repairing Set

| | I. | II. | kg/pc | CODE |
|---------|----|-----|-------|------------|
| komplet | 1 | 50 | 0,186 | OSAXXXXXXX |

Repairing set includes 5 pcs of repairing stakes \varnothing 12 mm and non-paired adapter \varnothing 12 mm.



Repairing Stakes

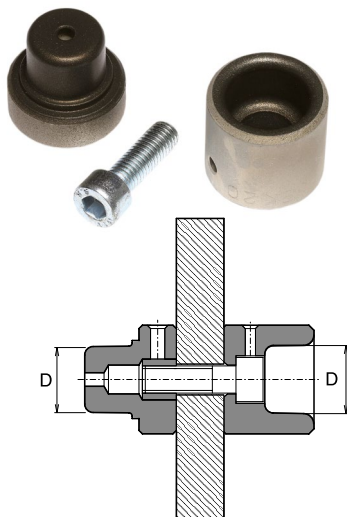
| \varnothing mm | I. | II. | kg/pc | CODE |
|------------------|----|-----|-------|-----------|
| 12 | 5 | 100 | 0,029 | OTXXXXXXX |



Electrofusion Welding Machine Elektra Light

| | W | | kg/pc | CODE |
|-----------------|------|---|-------|-------------|
| 20 – 125/160 mm | 2000 | 1 | 8,000 | SVAELEKTRAL |

Job-order manufacture, delivery date 30 days



Adapter Paired

| D mm | | kg/pc | CODE |
|------|---|-------|------------|
| 16 | 1 | 0,074 | NAP016XXXX |
| 20 | 1 | 0,078 | NAP020XXXX |
| 25 | 1 | 0,138 | NAP025XXXX |
| 32 | 1 | 0,164 | NAP032XXXX |
| 40 | 1 | 0,308 | NAP040XXXX |
| 50 | 1 | 0,333 | NAP050XXXX |
| 63 | 1 | 0,493 | NAP063XXXX |
| 75 | 1 | 0,653 | NAP075XXXX |
| 90 | 1 | 1,089 | NAP090XXXX |
| 110 | 1 | 1,681 | NAP110XXXX |
| 125 | 1 | 1,996 | NAP125XXXX |

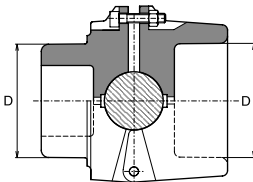
Set contains

- ⦿ 4x plastic holder
- ⦿ 4x screw for holder
- ⦿ 4x bolt for holder
- ⦿ 2x holder

Set Holder for Manifolds

Fixing distance
between plastic
holders

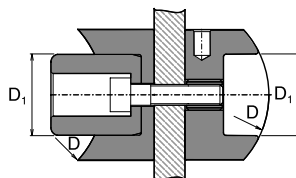
| mm | I. | II. | kg/pc | CODE |
|-----|----|-----|-------|------------|
| 200 | 1 | 5 | 0,403 | SETDRZROZX |



Adapter Non-Paired

| D mm | ⦿ | kg/pc | CODE |
|---------|---|-------|------------|
| 16 | 1 | 0,130 | NA016CXXXX |
| 20 | 1 | 0,133 | NA020CXXXX |
| 25 | 1 | 0,178 | NA025CXXXX |
| 32 | 1 | 0,215 | NA032CXXXX |
| 40 | 1 | 0,379 | NA040CXXXX |
| 50 | 1 | 0,517 | NA050CXXXX |
| 63 | 1 | 0,822 | NA063CXXXX |

Adapter for Weld in Saddle / Paired



| D mm | D ₁ mm | ⦿ | kg/pc | CODE |
|---------|----------------------|---|-------|------------|
| 63 | 32 | 1 | 0,298 | SNNS06332X |
| 75 | 32 | 1 | 0,296 | SNNS07532X |
| 90 | 32 | 1 | 0,296 | SNNS09032X |
| * 110 | 40 | 1 | 0,432 | SNNS11040X |
| ** 125 | 40 | 1 | 0,519 | SNNS12540X |
| *** 125 | 63 | 1 | 1,148 | SNNS12563X |



* for weld in saddle with diameter 110/32 and 110/40
 ** for weld in saddle with diameter 125/32 and 125/40
 *** for weld in saddle with diameter 110/50 and 125/63

Catalogue of Products

Accessories (IV.)

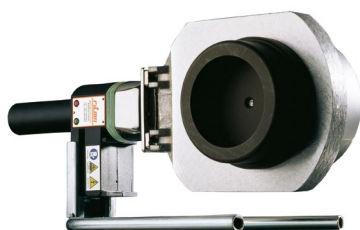


Welding MP-125



| | D mm |  |  kg/pc | CODE |
|--------|---------|--|--|------------|
| MP-125 | 63-125 | 1 | 37,200 | SVAMP125XX |

MP 125 Includes frame, stand with welding machine with power consumption of 1400 W, case with accessories.

Job-order manufacture, delivery date 30 days.





Welding Machine Prisma 125

| W |  |  kg/pc | CODE |
|------|---|--|------------|
| 1400 | 1 | 2,760 | SVA125XXXX |





Contact Thermometer „DT” Meter

| |  |  kg/pc | CODE |
|----------|---|--|------------|
| DT-METER | 1 | 0,940 | TEPODXXXXX |





Tightening Spanner with Band

| |  |  kg/pc | CODE |
|--|---|---|------------|
| | 1 | 0,297 | UKXXXXXXXX |





Pipe Cutter – Shear (Profi)

| D mm |  |  kg/pc | CODE |
|-------|---|---|------------|
| 16-40 | 1 | 0,383 | NU042PXXXX |





Pipe Cutter – Shear (Profi M2)

| D mm |  |  kg/pc | CODE |
|-------|---|---|------------|
| 16-63 | 1 | 1,241 | NU063XXXXX |



Pipe Cutter

| D mm |  |  kg/pc | CODE |
|--------|---|---|------------|
| 50-125 | 1 | 1,400 | REZ050125X |

Catalogue of Products

Accessories (IV.)



Stabi Pipe Shaver

| D mm | ☒ | ⚖ kg/pc | CODE |
|---------|---|------------|------------|
| 16-20 | 1 | 0,134 | REZS01620X |
| 20-25 | 1 | 0,156 | REZS02025X |
| 25-32 | 1 | 0,206 | REZS02532X |
| 32-40 | 1 | 0,266 | REZS03240X |
| 50 | 1 | 0,302 | REZS050XXX |
| 63 | 1 | 0,352 | REZS063XXX |
| 75 | 1 | 0,386 | REZS075XXX |
| 90 | 1 | 0,634 | REZS090XXX |
| 110 | 1 | 0,870 | REZS110XXX |



Shavers To Drill Machine For Stabi Pipes

| D mm | ☒ | ⚖ kg/pc | CODE |
|---------|---|------------|------------|
| 40 | 1 | 0,290 | REZS040VXX |
| 50 | 1 | 0,882 | REZS050VXX |
| 63 | 1 | 0,406 | REZS063VXX |
| pintle | 1 | 0,020 | CEPXXXXXXX |



Drill For Weld In Saddle

| D mm | ☒ | ⚖ kg/pc | CODE |
|---------|---|------------|------------|
| 32 | 1 | 0,200 | VNS032XXXX |
| 40 | 1 | 0,300 | VNS040XXXX |
| 63 | 1 | 0,740 | VNS063XXXX |



Galvanized Trough

| D mm | l mm | ☒ I. | ☒ II. | ⚖ kg/pc | CODE |
|---------|---------|---------|----------|------------|------------|
| 20 | 2000 | 1 | 25 | 0,331 | ZLSP20XXXX |
| 25 | 2000 | 1 | 25 | 0,428 | ZLSP25XXXX |
| 32 | 2000 | 1 | 25 | 0,516 | ZLSP32XXXX |
| 40 | 2000 | 1 | 25 | 0,607 | ZLSP40XXXX |
| 50 | 2000 | 1 | 25 | 0,732 | ZLSP50XXXX |
| 63 | 2000 | 1 | 25 | 0,879 | ZLSP63XXXX |



Plug – Short

| G | I. | II. | kg/pc | CODE |
|------|----|-----|-------|-----------|
| 1/2" | 50 | 250 | 0,008 | ZAGXXXXXX |

including rubber seal



Plug – Long

| G | I. | II. | kg/pc | CODE |
|------|----|-----|-------|-----------|
| 1/2" | 50 | 250 | 0,022 | ZAGDXXXXX |

including rubber seal



Mastic Sealant – Siseal

| g | I. | kg/pc | CODE |
|-----|----|-------|------------|
| 10 | 1 | 0,018 | TMSIS10XXX |
| 100 | 1 | 0,124 | TMSIS100XX |



Sealing Teflon Fibre

| | I. | kg/pc | CODE |
|--|-----|-------|------------|
| | 50 | 0,053 | TTN50XXXXX |
| | 150 | 0,126 | TTN150XXXX |

Catalogue of Products

Products for Potable (Cold) and Hot Water, compressed air, cooling and air conditioning. (I.)

Wavin Ekoplastik System diameters 160–250 mm

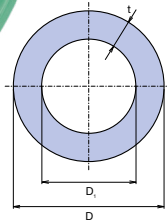
The system consists of monolayer pipes, multilayer pipes and fittings with diameters between 160-250 mm and is manufactured from the PP-RCT material. The system is intended for pressure distribution systems of potable (cold) water, hot water, compressed air, cooling water and air conditioning. The system is compatible with butt welding techniques.

- ⦿ Estimated delivery time for the listed product range is 30 days.
- ⦿ Standard products (I) are covered by a 10-year warranty period.
- ⦿ Other products (IV.) are covered by a 2-year warranty period.



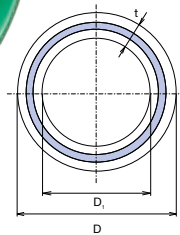
Benefits

- ⦿ Pipes and fittings made from PP-RCT (type 4), new generation polypropylene material
- ⦿ Pipes and fittings of larger diameters than 125 mm are designed for butt welding
- ⦿ Same flow profile for both fittings and monolayer pipes - minimal pressure losses



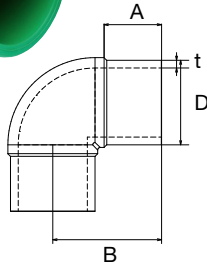
Pipe Ekoplastik PP-RCT, S 5 / SDR 11

| D mm | D ₁ mm | t mm | l mm | ☒ m | ⚖ kg/pc | CODE |
|---------|----------------------|---------|---------|--------|------------|-------------|
| 160 | 130,8 | 14,6 | 4000 | 4 | 6,420 | TTR160RCTS5 |
| 200 | 163,6 | 18,2 | 4000 | 4 | 9,950 | TTR200RCTS5 |
| 250 | 204,6 | 22,7 | 4000 | 4 | 15,500 | TTR250RCTS5 |



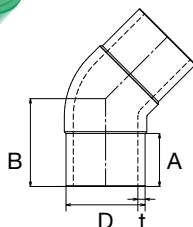
Pipe Ekoplastik FIBER BASALT CLIMA, S 5 / SDR 11

| D mm | D ₁ mm | t mm | l mm | ☒ m | ⚖ kg/pc | CODE |
|---------|----------------------|---------|---------|--------|------------|--------------|
| 160 | 130,8 | 14,6 | 4000 | 4 | 7,185 | TTRFBC160RCT |
| 200 | 163,6 | 18,2 | 4000 | 4 | 11,157 | TTRFBC200RCT |
| 250 | 204,6 | 22,7 | 4000 | 4 | 16,870 | TTRFBC250RCT |



Elbow 90° PP-RCT, S 5 / SDR 11

| D mm | A mm | B mm | t mm | ☒ pc | ⚖ kg/pc | CODE |
|---------|---------|---------|---------|---------|------------|-------------|
| 160 | 103 | 210 | 14,6 | 1 | 3,000 | TKO16090XXX |
| 200 | 115 | 239 | 18,2 | 1 | 5,200 | TKO20090XXX |
| 250 | 116 | 250 | 22,7 | 1 | 10,500 | TKO25090XXX |



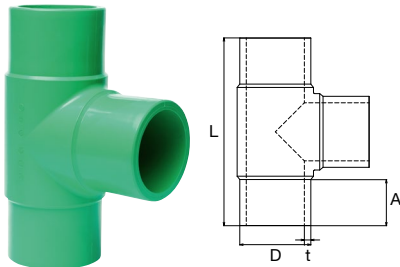
Elbow 45° PP-RCT, S 5 / SDR 11

| D mm | A mm | B mm | t mm | ☒ pc | ⚖ kg/pc | CODE |
|---------|---------|---------|---------|---------|------------|-------------|
| 160 | 107 | 175 | 14,6 | 1 | 2,400 | TKO16045XXX |
| 200 | 118 | 190 | 18,2 | 1 | 4,000 | TKO20045XXX |
| 250 | 130 | 215 | 22,7 | 1 | 7,100 | TKO25045XXX |

Catalogue of Products

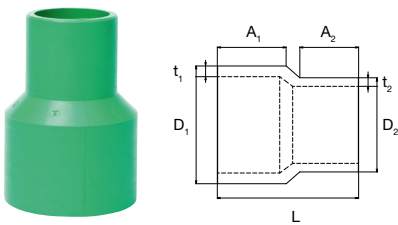
Products for Potable (Cold) and Hot Water, compressed air, cooling and air conditioning. (I.)

Tee PP-RCT, S 5 / SDR 11



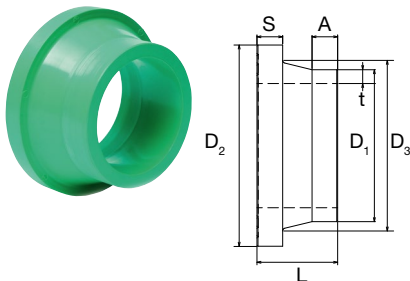
| D mm | A mm | L mm | t mm | 📦 pc | ⚖️ kg/pc | CODE |
|---------|---------|---------|---------|---------|-------------|-------------|
| 160 | 104 | 423 | 14,6 | 1 | 4,100 | TTK160XXXXX |
| 200 | 117 | 501 | 18,2 | 1 | 7,200 | TTK200XXXXX |
| 250 | 131 | 595 | 22,7 | 1 | 13,600 | TTK250XXXXX |

Reducer PP-RCT, S 5 / SDR 11



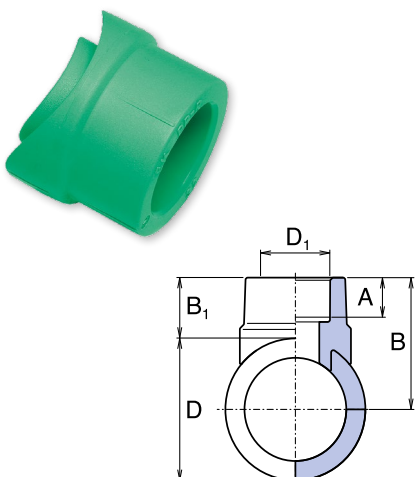
| D ₁ mm | D ₂ mm | t ₁ mm | t ₂ mm | A ₁ mm | A ₂ mm | L mm | 📦 pc | ⚖️ kg/pc | CODE |
|----------------------|----------------------|----------------------|----------------------|----------------------|----------------------|---------|---------|-------------|-------------|
| 160 | 110 | 14,6 | - | 106 | 92 | 226 | 1 | 1,200 | TRE1160110X |
| 160 | 125 | 14,6 | - | 105 | 93 | 216 | 1 | 1,328 | TRE1160125X |
| 200 | 160 | 18,2 | 14,6 | 117 | 100 | 240 | 1 | 2,100 | TRE1200160X |
| 250 | 160 | 22,7 | 14,6 | 60 | 56 | 162 | 1 | 3,000 | TRE1250160X |
| 250 | 200 | 22,7 | 18,2 | 128 | 116 | 274 | 1 | 3,600 | TRE1250200X |

Flange Adaptor PP-RCT, S 5 / SDR 11

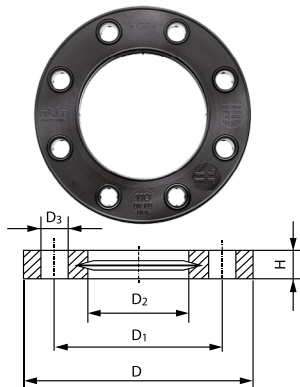


| D ₁ mm | D ₂ mm | D ₃ mm | S mm | A mm | t mm | L mm | 📦 pc | ⚖️ kg/pc | CODE |
|----------------------|----------------------|----------------------|---------|---------|---------|---------|---------|-------------|-------------|
| 160 | 212 | 175 | 27 | 27 | 18,2 | 85 | 1 | 0,960 | TLN160XXXXX |
| 200 | 268 | 232 | 34 | 50 | 14,6 | 130 | 1 | 2,300 | TLN200XXXXX |
| 250 | 320 | 285 | 36 | 38 | 22,7 | 121 | 1 | 3,100 | TLN250XXXXX |

All Plastic Weld In Saddle



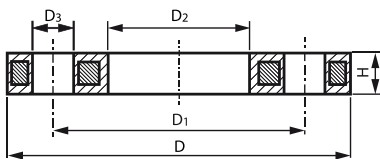
| D mm | D ₁ mm | A mm | B ₁ mm | B mm | 📦 pc | ⚖️ kg/pc | CODE |
|---------|----------------------|---------|----------------------|---------|---------|-------------|------------|
| 160 | 40 | 16,5 | 35,0 | 115,0 | 1 | 0,054 | TNS16040XX |
| 160 | 50 | 18,5 | 41,5 | 121,5 | 1 | 0,095 | TNS16050XX |
| 160 | 63 | 22,0 | 41,8 | 121,8 | 1 | 0,155 | TNS16063XX |
| 200 | 50 | 15,5 | 41,5 | 141,5 | 1 | 0,090 | TNS20050XX |
| 200 | 63 | 22,0 | 41,8 | 141,8 | 1 | 0,159 | TNS20063XX |
| 200 | 75 | 25,0 | 45,0 | 145,0 | 1 | 0,220 | TNS20075XX |
| 200 | 90 | 27,0 | 61,0 | 161,0 | 1 | 0,505 | TNS20090XX |
| 250 | 63 | 22,0 | 41,8 | 166,8 | 1 | 0,145 | TNS25063XX |
| 250 | 75 | 25,0 | 45,0 | 170,0 | 1 | 0,215 | TNS25075XX |
| 250 | 90 | 27,0 | 61,0 | 186,0 | 1 | 0,485 | TNS25090XX |
| 250 | 110 | 31,0 | 66,8 | 191,8 | 1 | 0,660 | TNS250110X |



Flange PP – Glass Fiber Reinforced PN 16

| d mm | DN mm | D mm | D ₁ mm | D ₂ mm | D ₃ mm | H mm | Y | 📦 pc | ⚖️ kg/pc | CODE |
|---------|----------|---------|----------------------|----------------------|----------------------|---------|----|---------|-------------|-----------|
| 160 | 150 | 285 | 241 | 178 | 22 | 32 | 8 | 1 | 1,200 | FF700517W |
| 200 | 200 | 340 | 297 | 235 | 22 | 34 | 8 | 1 | 1,400 | FF700519W |
| 250 | 250 | 385 | 350 | 284 | 22 | 38 | 12 | 1 | 2,052 | FF700521W |

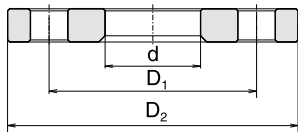
Flange PP - Glass Fiber Reinforced (30% GF) / Y - screw diameter



Flange PP – Steel Plate Reinforced PN 16

| d mm | DN mm | D mm | D ₁ mm | D ₂ mm | D ₃ mm | H mm | Y | 📦 pc | ⚖️ kg/pc | CODE |
|---------|----------|---------|----------------------|----------------------|----------------------|---------|----|---------|-------------|-----------|
| 160 | 150 | 285 | 241 | 178 | 22 | 26 | 8 | 1 | 3,491 | FF700217W |
| 200 | 200 | 340 | 297 | 235 | 22 | 29 | 8 | 1 | 5,600 | FF700219W |
| 250 | 250 | 395 | 350 | 288 | 22 | 32 | 12 | 1 | 6,632 | FF700221W |

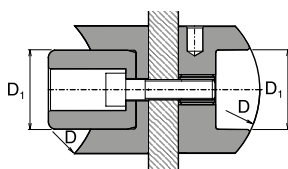
Flange PP - Glass Fiber Reinforced (30% GF) / Y - screw diameter



Flange

| mm | D ₁ mm | D ₂ mm | d mm | Y | 📦 pc | ⚖️ kg/pc | CODE |
|-----|----------------------|----------------------|---------|----|---------|-------------|------------|
| 160 | 240 | 285 | 178 | 10 | 1 | 0,960 | PRI160NXXX |
| 200 | 355 | 405 | 238 | 12 | 1 | 2,300 | PRI200NXXX |
| 250 | 355 | 405 | 292 | 12 | 1 | 3,100 | PRI250NXXX |

Y - screw diameter



Adapter for Weld in Saddle / Paired

| D mm | D ₁ mm | 📦 pc | ⚖️ kg/pc | CODE |
|---------|----------------------|---------|-------------|------------|
| 160 | 40 | 1 | 0,545 | SNNS16040X |
| 160 | 50 | 1 | 0,780 | SNNS16050X |
| 160 | 63 | 1 | 1,200 | SNNS16063X |
| 200 | 50 | 1 | 0,785 | SNNS20050X |
| 200 | 63 | 1 | 1,220 | SNNS20063X |
| 200 | 75 | 1 | 1,665 | SNNS20075X |
| 200 | 90 | 1 | 2,885 | SNNS20090X |
| 250 | 63 | 1 | 1,220 | SNNS25063X |
| 250 | 75 | 1 | 1,680 | SNNS25075X |
| 250 | 90 | 1 | 2,930 | SNNS25090X |
| 250 | 110 | 1 | 3,530 | SNNS250110 |

Catalogue of Products

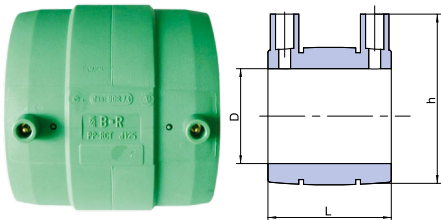
Accessories (IV.)

Drill for Weld in Saddle



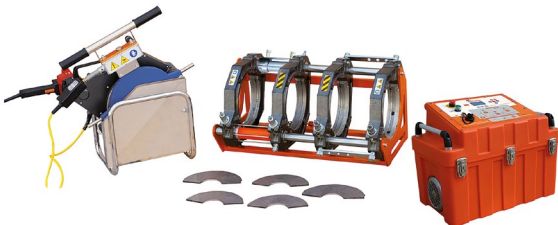
| D mm | 📦 pc | ⚖️ kg/pc | CODE |
|---------|---------|-------------|------------|
| 40 | 1 | 0,30 | VNS040XXXX |
| 50 | 1 | 0,50 | VNS050XXXX |
| 63 | 1 | 0,64 | VNS063XXXX |
| 75 | 1 | 0,71 | VNS075XXXX |
| 90 | 1 | 0,87 | VNS090XXXX |
| 110 | 1 | 1,22 | VNS110XXXX |

Electro-Fusion Socket PP-RCT



| D mm | L mm | h mm | 📦 pc | ⚖️ kg/pc | CODE |
|---------|---------|---------|---------|-------------|-------------|
| 160 | 176,0 | 205,0 | 1 | 1,300 | ENA160PPRCT |
| 200 | 187,0 | 245,0 | 1 | 1,900 | ENA200PPRCT |
| 250 | 243,0 | 315,0 | 1 | 4,500 | ENA250PPRCT |

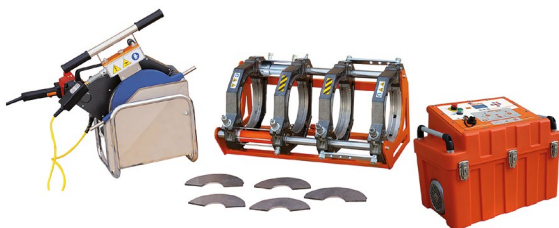
Assembly Jig



The assembly jig comprises the following:

- ⦿ A jig with four clamps and two hydraulic cylinders with non-drip quick couplers
- ⦿ One extractable heating plate
- ⦿ One extractable milling cutter with a safety microswitch

- ⦿ One electrohydraulic gearcase with a clamp opening and closing lever
- ⦿ Hydraulic hoses with non-drip quick couplers
- ⦿ SmartLock adapters (Ritmo patent) for the 75-225 mm diameters



The assembly jig comprises the following:

- ⦿ A jig with four clamps and two hydraulic cylinders with non-drip quick couplers
- ⦿ One extractable heating plate
- ⦿ One electrohydraulic gearcase with a clamp opening and closing lever

- ⦿ One electrohydraulic gearcase with a clamp opening and closing lever
- ⦿ Hydraulic hoses with non-drip quick couplers
- ⦿ SmartLock adapters (Ritmo patent) for the 90-280 mm diameters, Ø 250 mm transition

| | 📦 pc | ⚖️ kg/pc | CODE |
|---------------------|---------|-------------|------------|
| Basic 250 Easy Life | 1 | 100 | SVAMP250XX |

| | 📦 pc | ⚖️ kg/pc | CODE |
|---------------------|---------|-------------|------------|
| Basic 315 Easy Life | 1 | 123 | SVAMP315XX |

- ② For production and testing is used standard EN ISO 15874. Requirements from this standard are stated in PN 01 (Internal Company Standard).
- ② The application and assembling of products have to conform to assembly regulations of ekoplastik system.
- ② System of quality is certified in accordance with ISO 9001-2000
- ② Extended warranty period 10 years for standard products (I.,II.)
- ② Common warranty period 2 years for other products (III.,IV.)



SHORTCUTS USED

CODE – purchasing code

S/PN – serie / pressure line

I. – small packing

II. – big packing

G – female cylindrical thread no sealing on threads

Rp – female cylindrical thread sealing on threads

R – male conical thread sealing on threads

Discover our broad portfolio at wavin.com

Water management
Heating and cooling

Water and gas distribution
Waste water drainage



Wavin is part of Orbia, a community of companies working together to tackle some of the world's most complex challenges. We are bound by a common purpose: To Advance Life Around the World.



WAVIN Czechia, s.r.o. | Rudeč 848 | 277 13 Kostelec nad Labem | Czech Republic | Phone +420/ 326 983 111 | Fax +420/ 326 983 110 | www.wavinekoplastik.com | E-mail ekoplastik@wavin.com

Wavin operates a programme of continuous product development, and therefore reserves the right to modify or amend the specification of their products without notice. All information in this publication is given in good faith, and believed to be correct at the time of going to press. However, no responsibility can be accepted for any errors, omissions or incorrect assumptions.

© 2019 Wavin Wavin reserves the right to make alterations without prior notice. Due to continuous product development, changes in technical specifications may change. Installation must comply with the installation instructions.